

PEEK-A-BOO.

WALTZ.



Arranged for the Guitar by JUSTIN HOLLAND.

ROSABEL.

Tune the 6th String to F.

GUITAR.



First staff of guitar music, featuring a treble clef, a key signature of one flat (B-flat), and a 3/4 time signature. The staff contains a series of chords and melodic lines with fingerings indicated by numbers 1-4. A '0' indicates an open string.



Second staff of guitar music, continuing the piece with various chordal textures and melodic fragments.



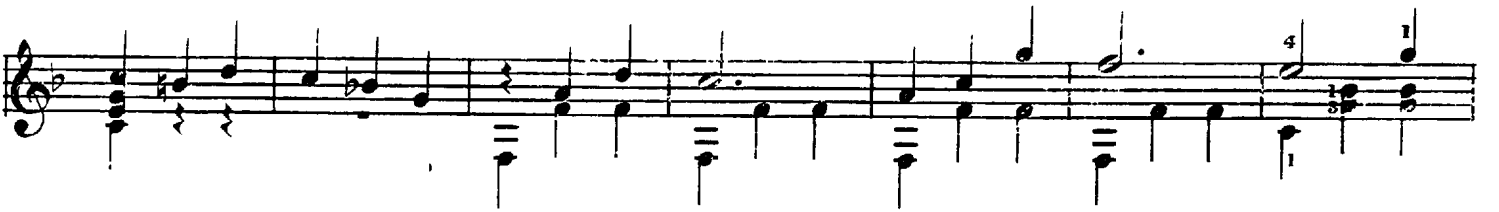
Third staff of guitar music, showing more complex chordal structures and melodic lines.



Fourth staff of guitar music, featuring a change in key signature to two flats (B-flat and E-flat) and a 3/4 time signature. It includes various chordal textures and melodic lines.



Fifth staff of guitar music, concluding the piece with various chordal textures and melodic lines.



First musical staff, featuring a treble clef and a key signature of one flat. The staff contains a sequence of chords and melodic lines. Fingerings are indicated by numbers 1, 2, 3, and 4 above the notes.

Second musical staff, continuing the musical notation with various chordal textures and melodic fragments.

Third musical staff, showing further development of the musical material with complex chordal structures.

Fourth musical staff, featuring a melodic line with some chromaticism and accompanying chords.

Fifth musical staff, containing a sequence of chords with fingerings 2 and 7 indicated.

Sixth musical staff, showing a melodic line with a fermata and complex chordal accompaniment.

Seventh musical staff, concluding the page with a melodic line and a final chordal texture.