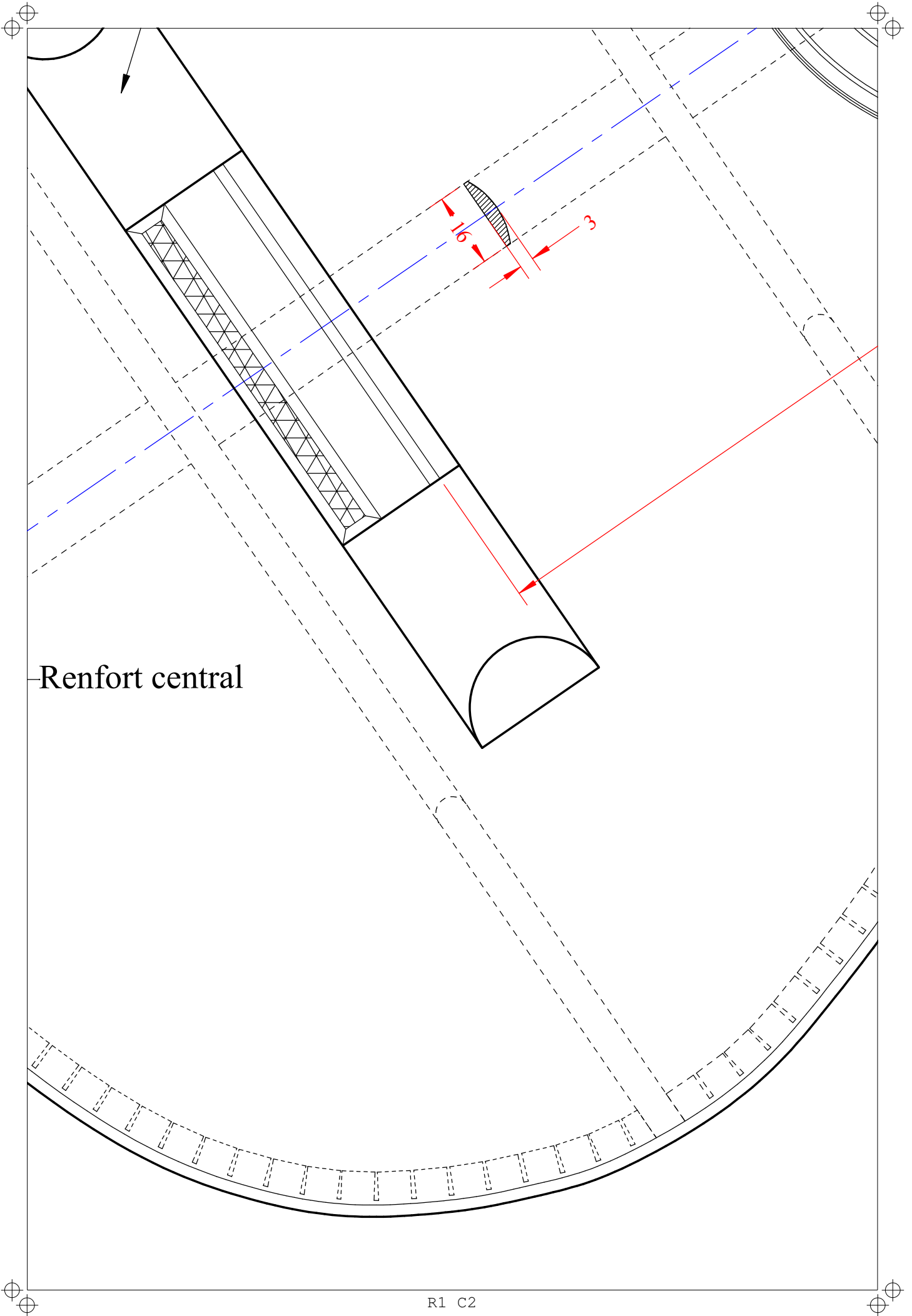
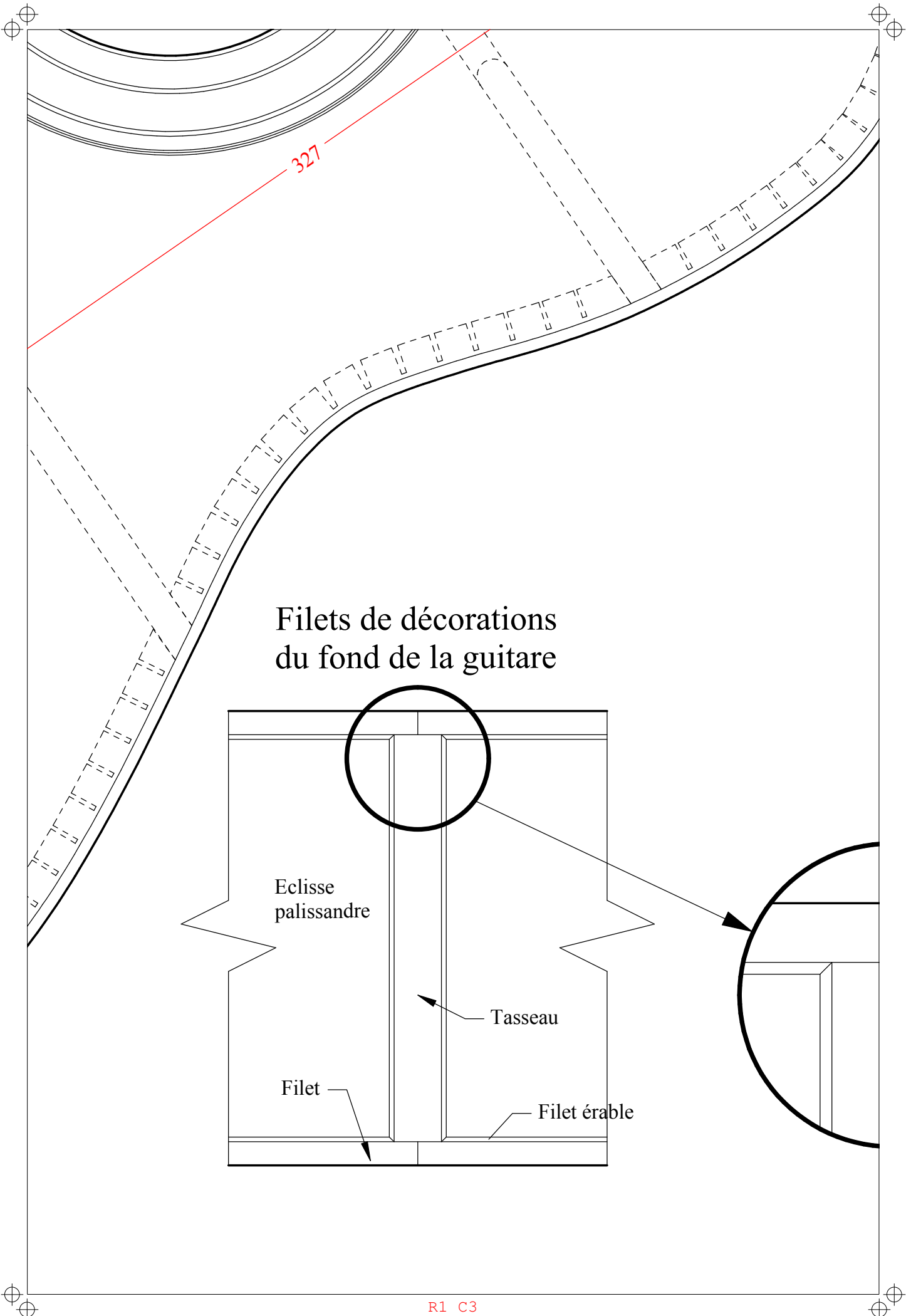


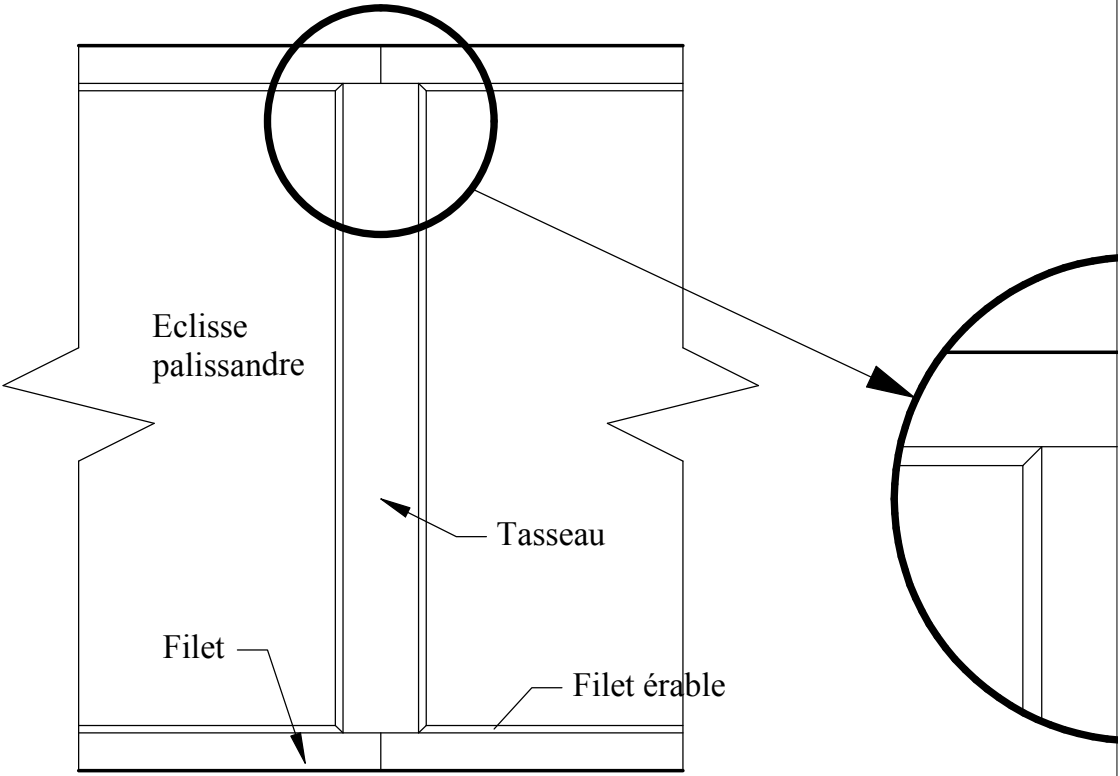
Talon

R1 C1





Filets de décorations
du fond de la guitare



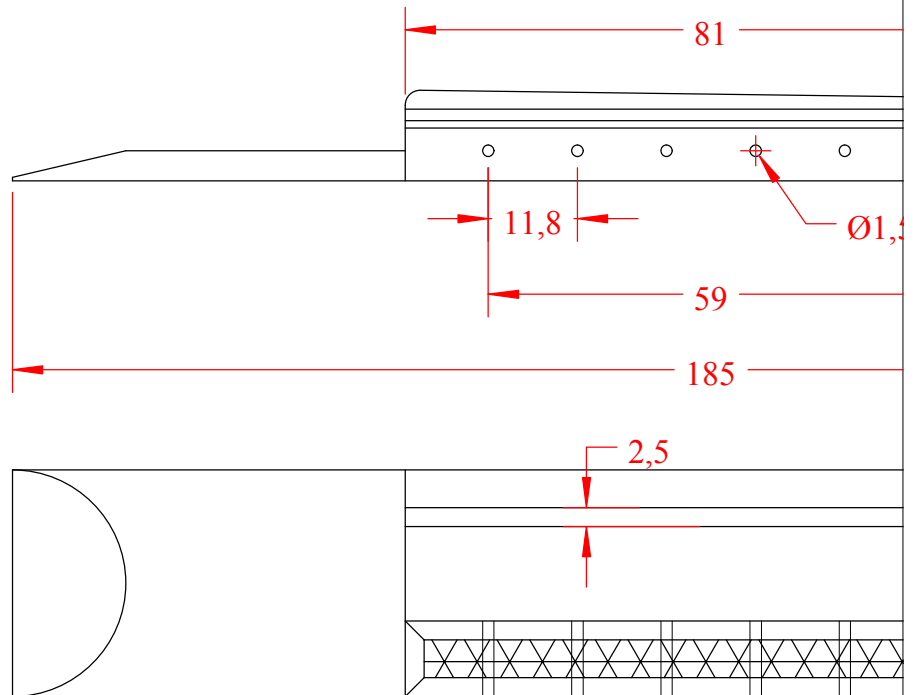
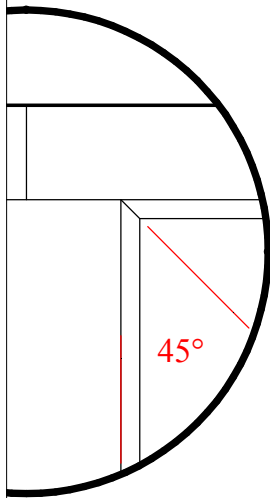
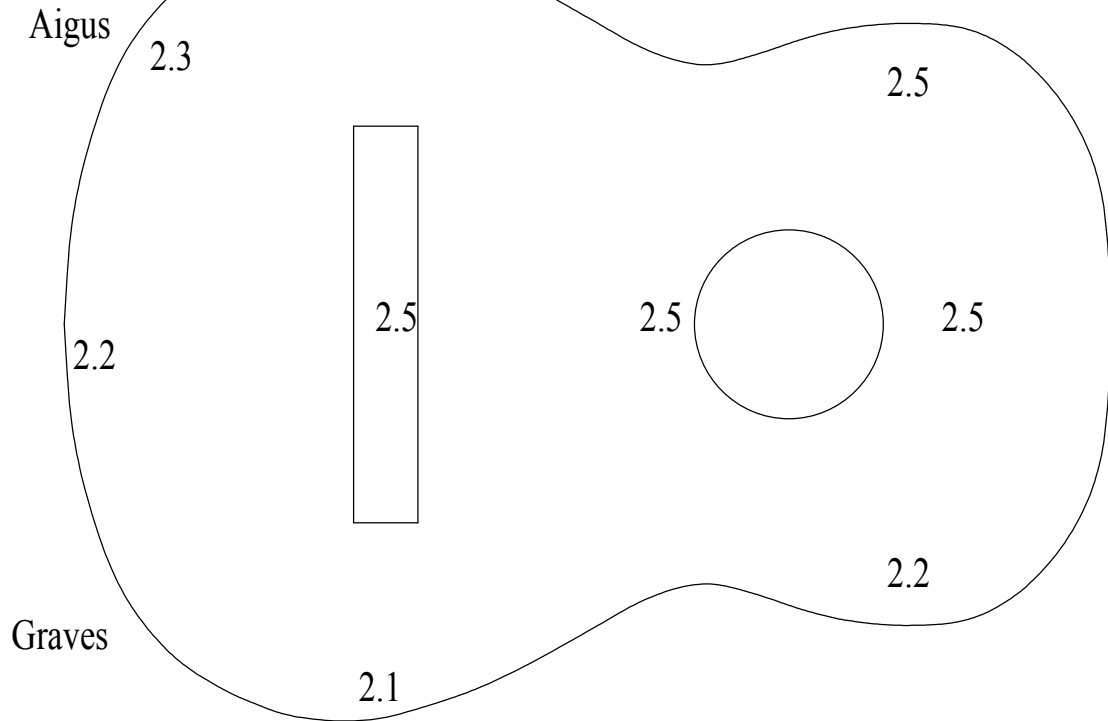
Eclisse
palissandre

Tasseau

Filet

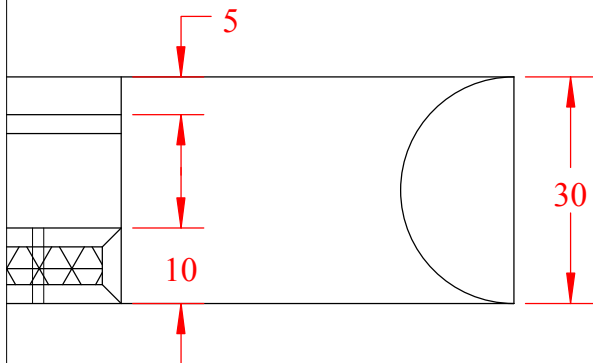
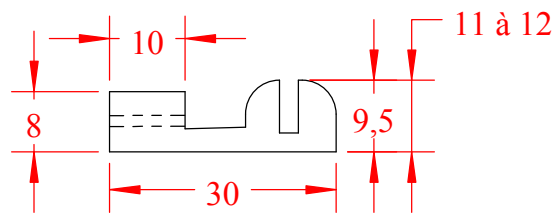
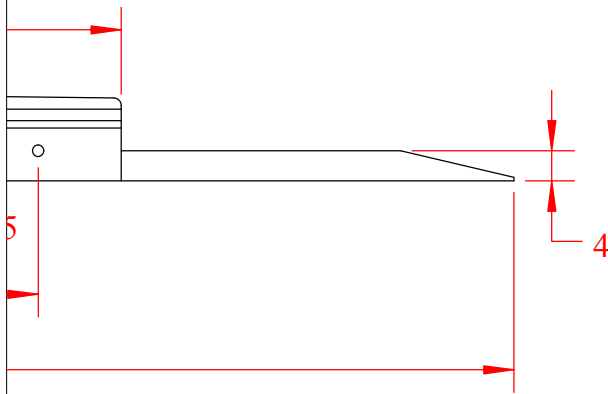
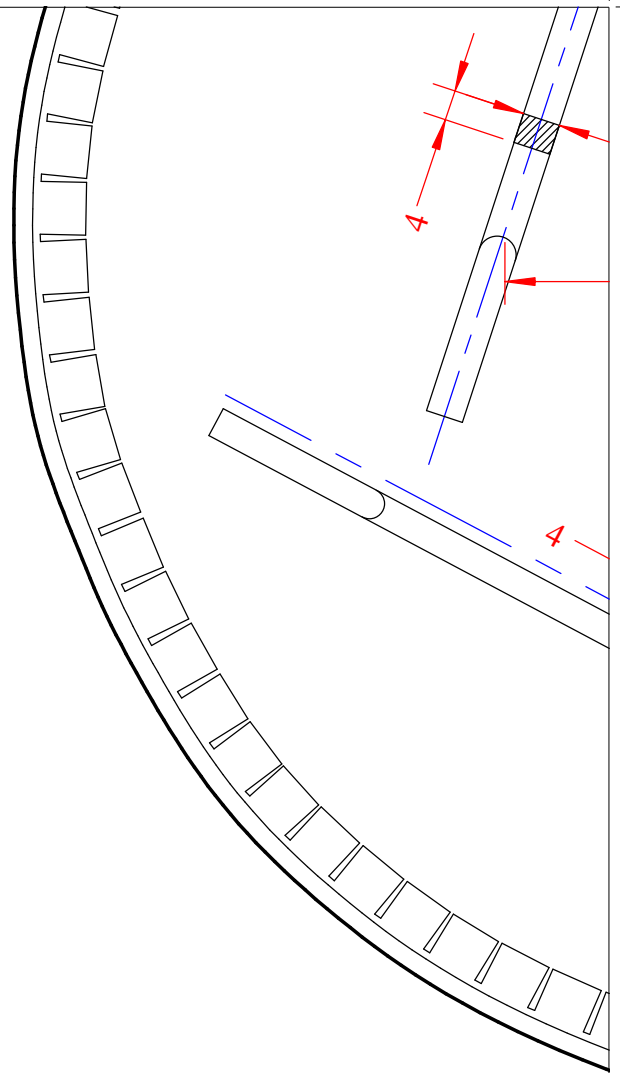
Filet érable

Epaisseurs de la table



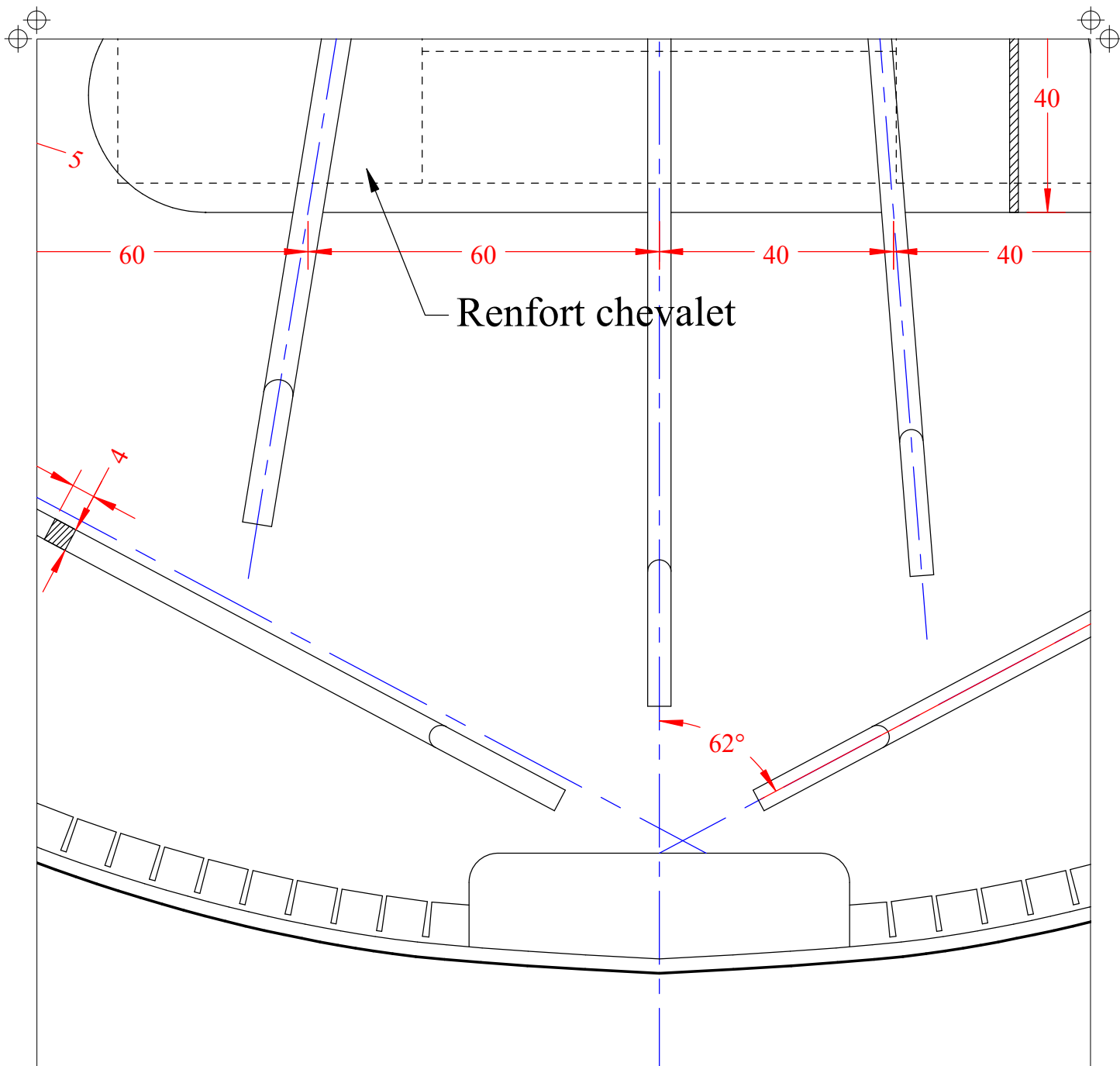
Chevalet palissand
poids 18 à 20 gr ma

frette 3	105,4
frette 4	134,1
frette 5	163,0
frette 6	190,4
frette 7	216,2
frette 8	240,5
frette 9	263,5
frette 10	285,2
frette 11	305,7
frette 12	325,0
frette 13	343,2
frette 14	360,4
frette 15	376,7
frette 16	392,0
frette 17	406,5
frette 18	420,2
frette 19	433,1



re
axi

Diapason
Longue
Grand l
Taille
Petit lo
Courbu
Courbu
Angle d



on	650 mm
ur corps	489 mm
obe	370 mm
	240 mm
oe	280 mm
re de la table au chevalet	4 mm
re du fond	4 mm
le renversement	1°

Guitare

L. LEGER

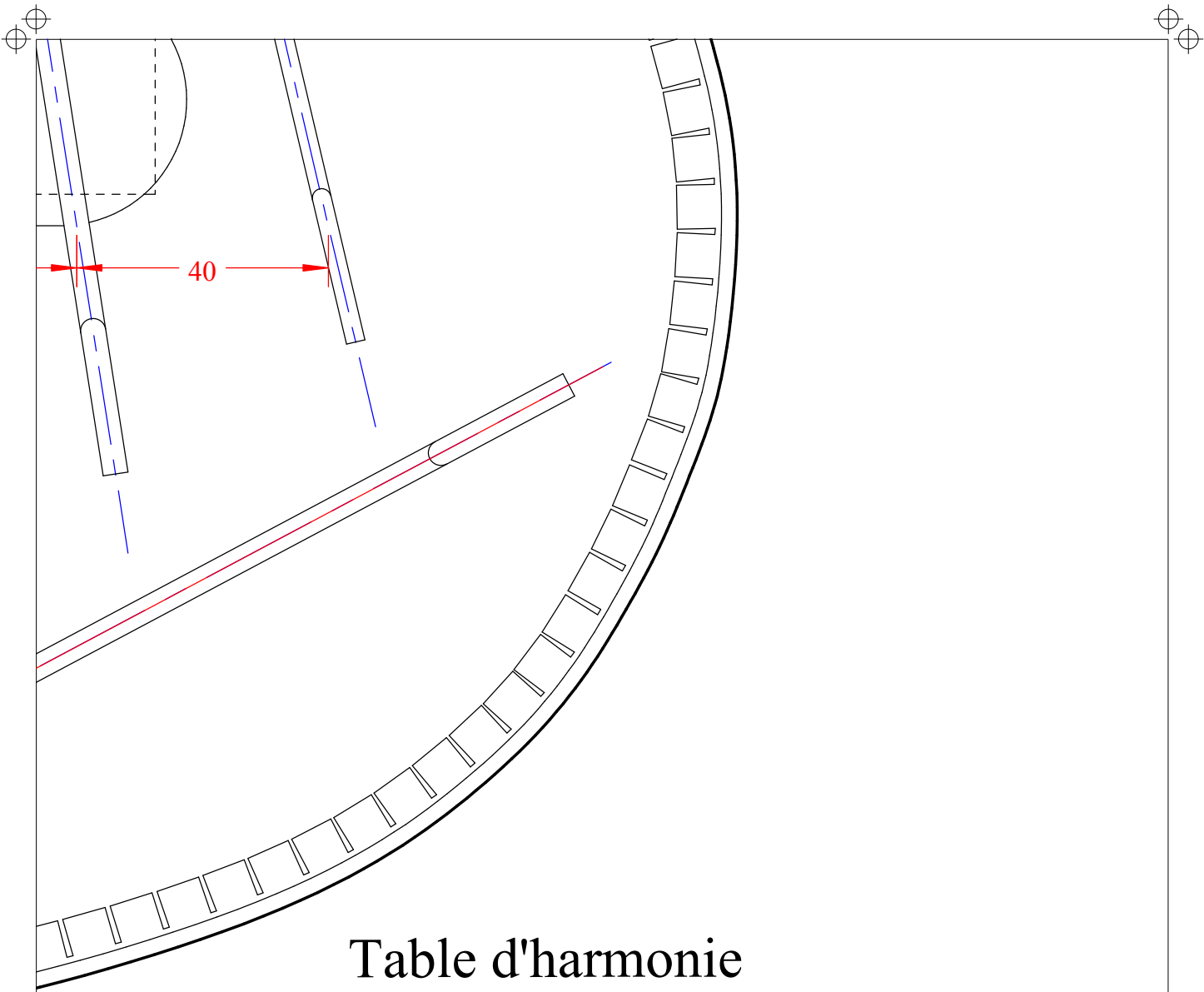
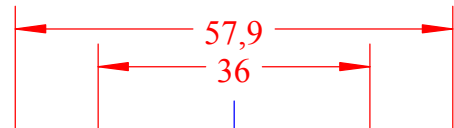


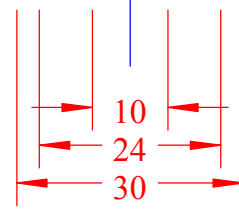
Table d'harmonie
vue de dessous

e Classique
EAY - 08 / 2002



Vue de face
côté manche

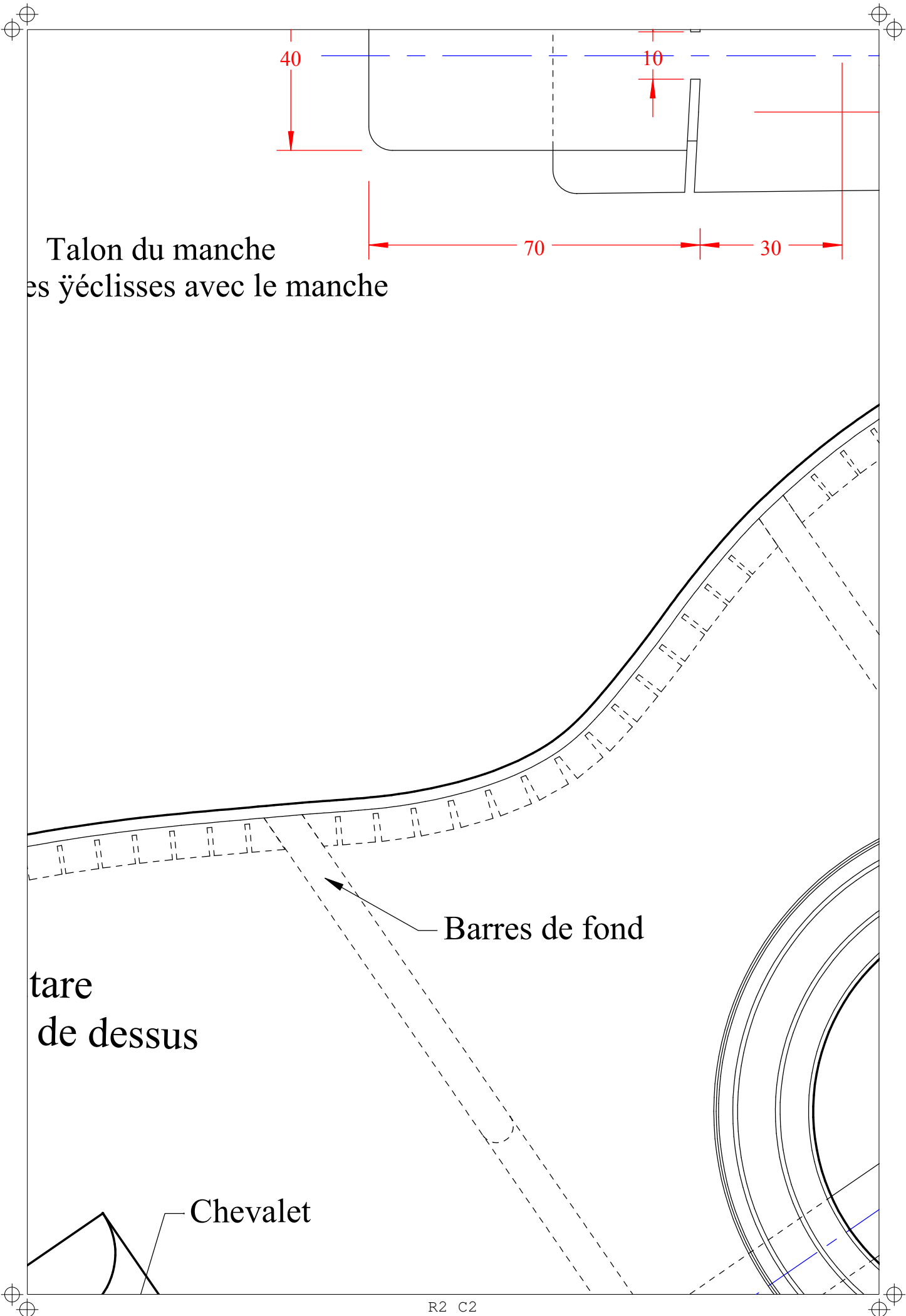
Joint de



Contre éclise

Gui
vue

R2 C1

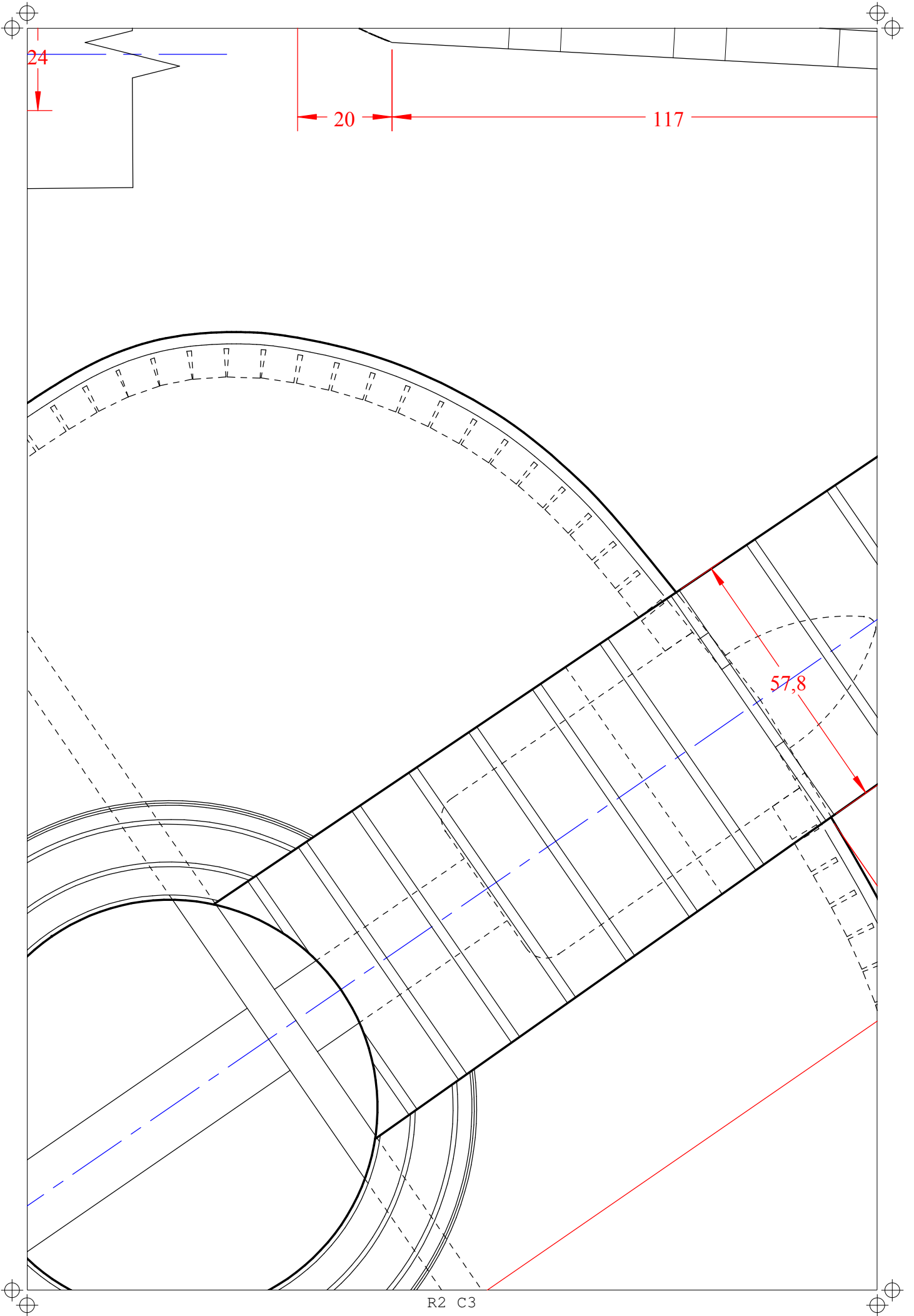


Talon du manche
es yéclisses avec le manche

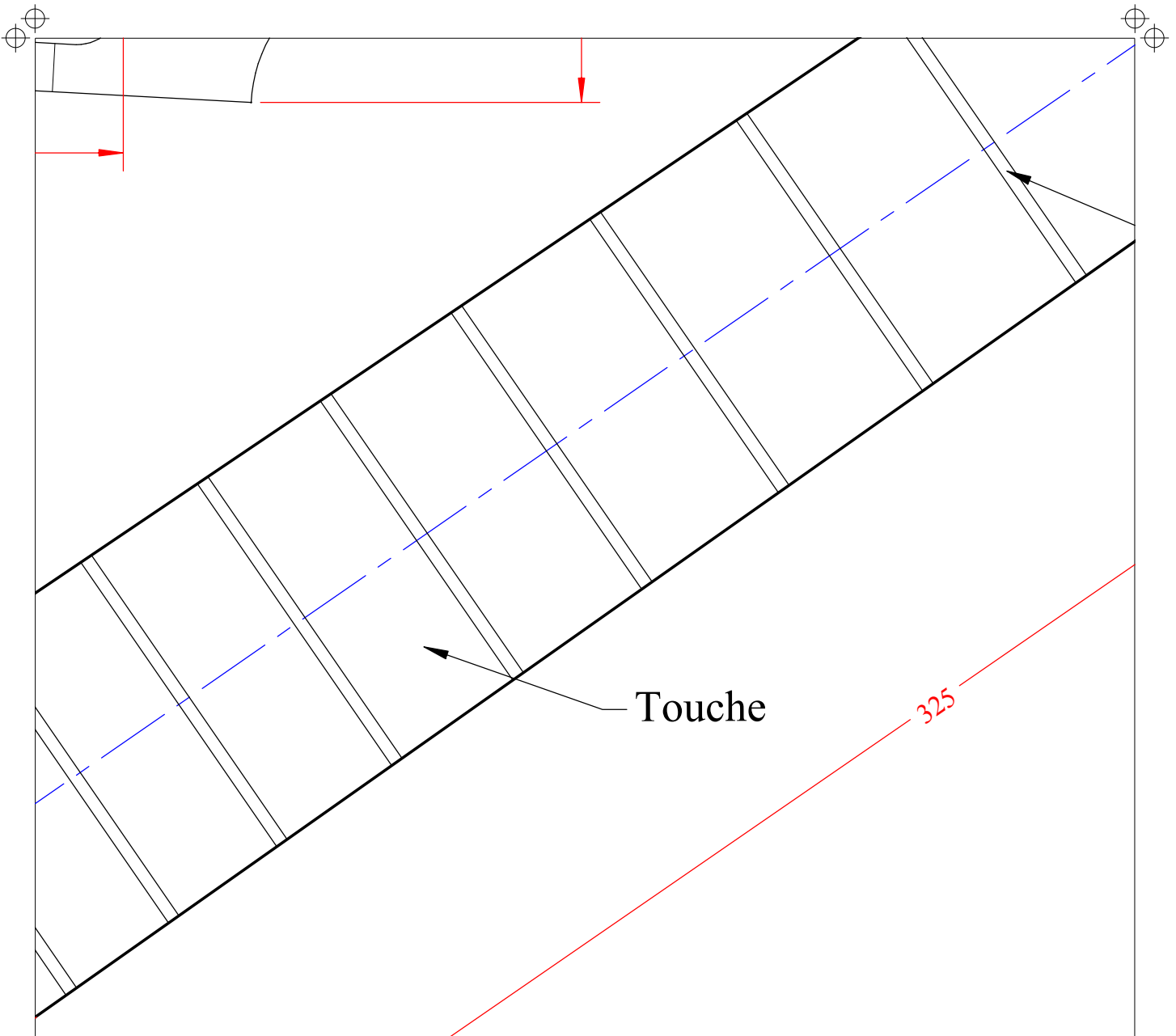
Barres de fond

tare
de dessus

Chevalet



R2 C3

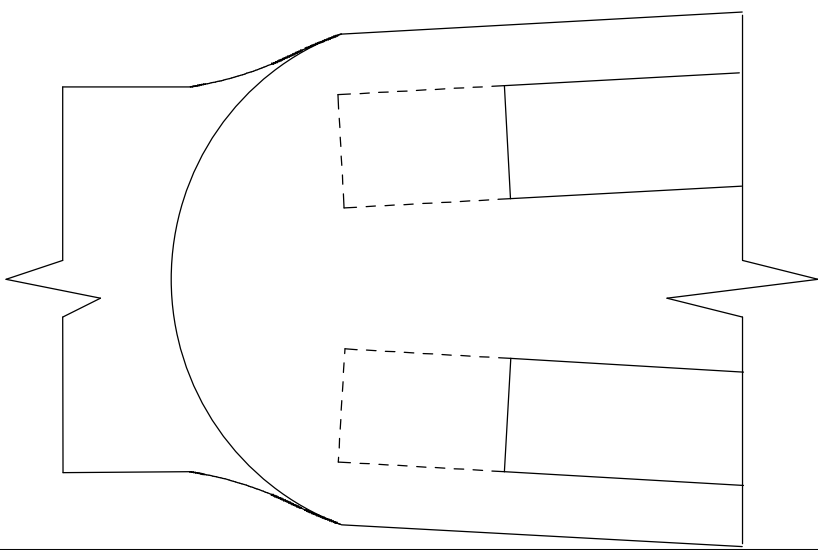
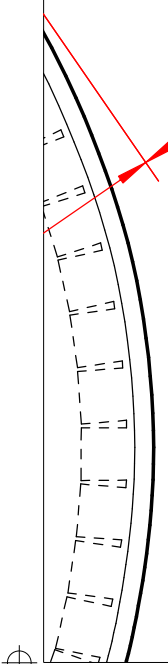
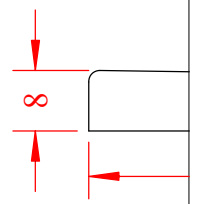


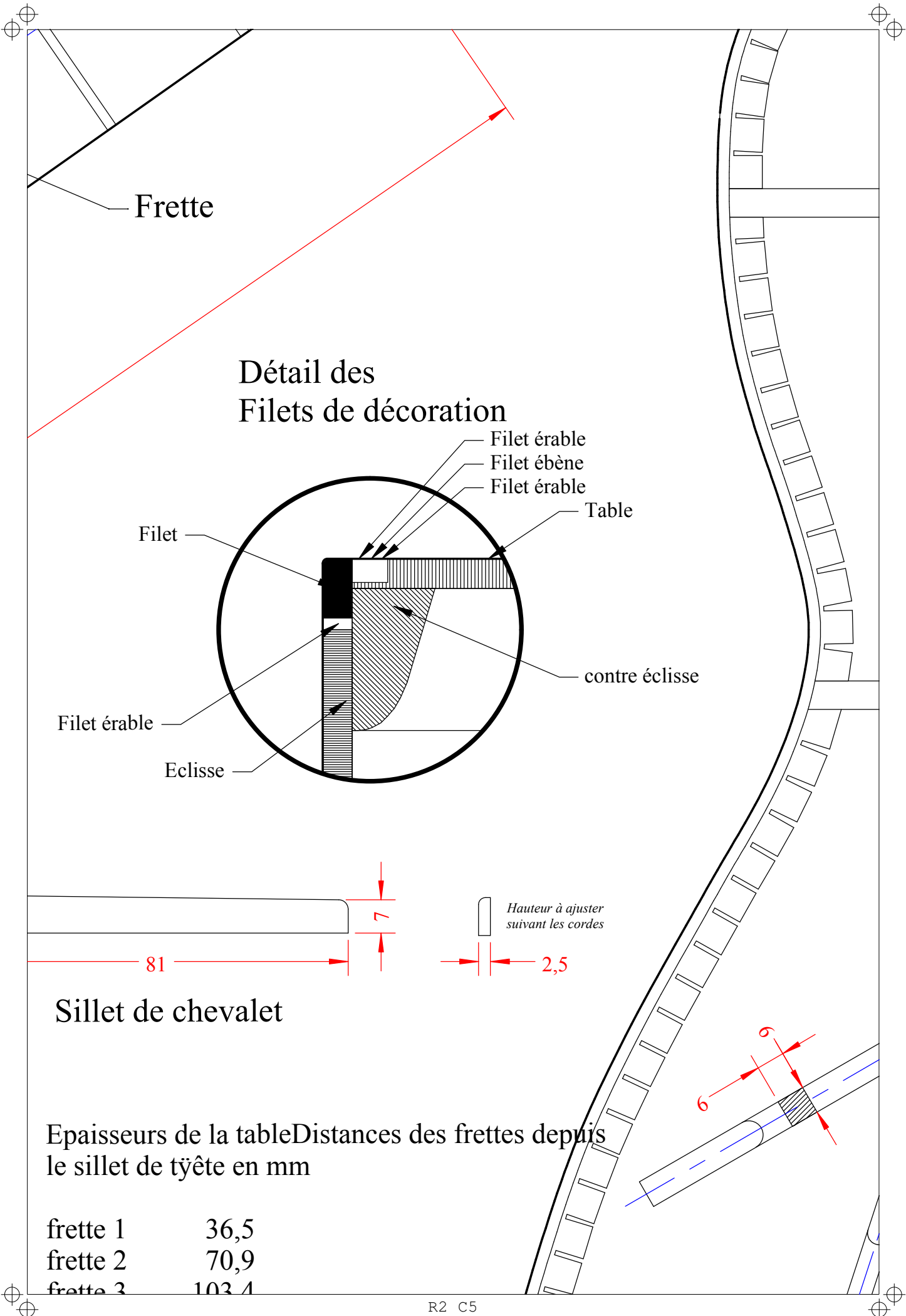
Touche

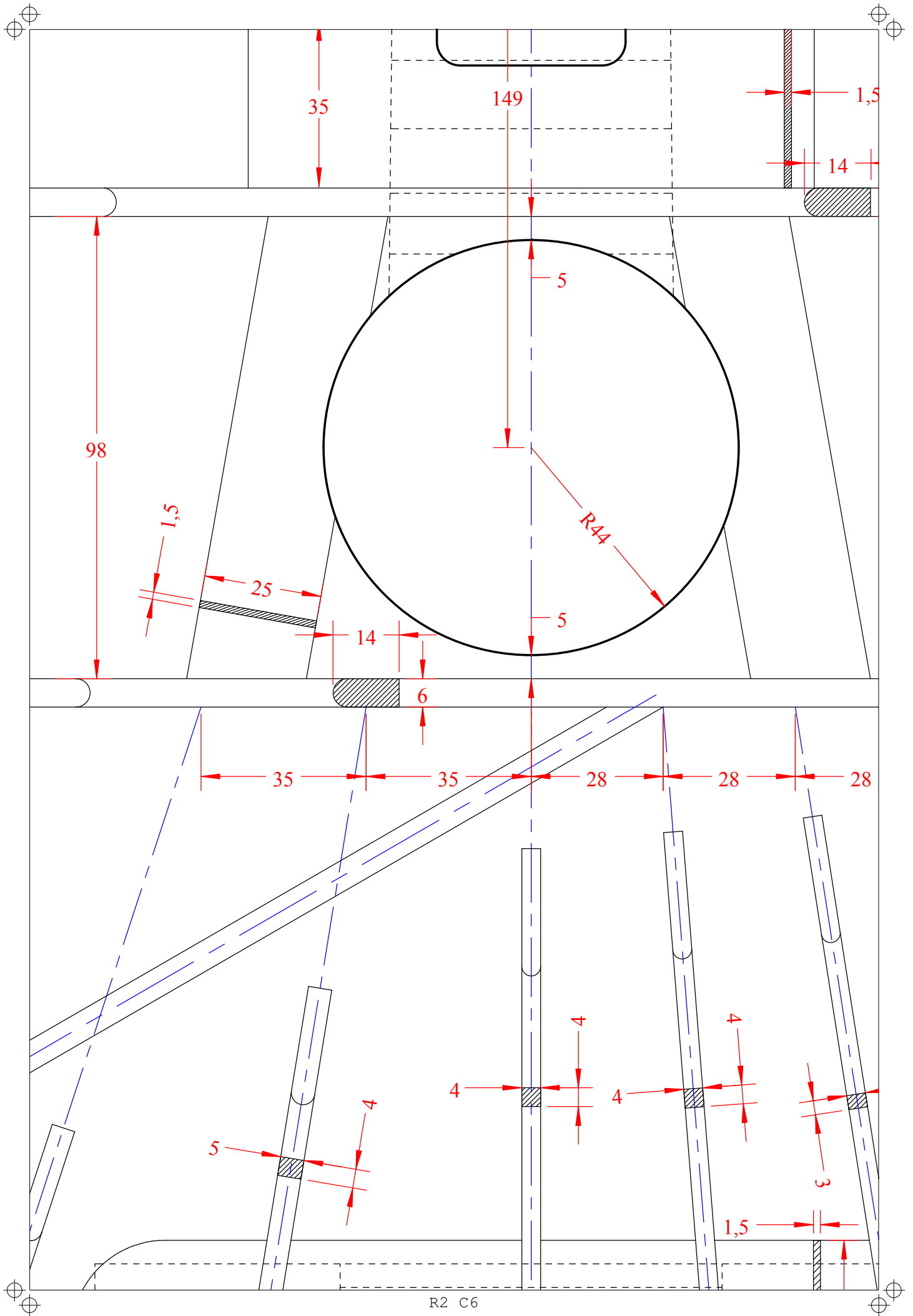
325

Tête vue de dessous

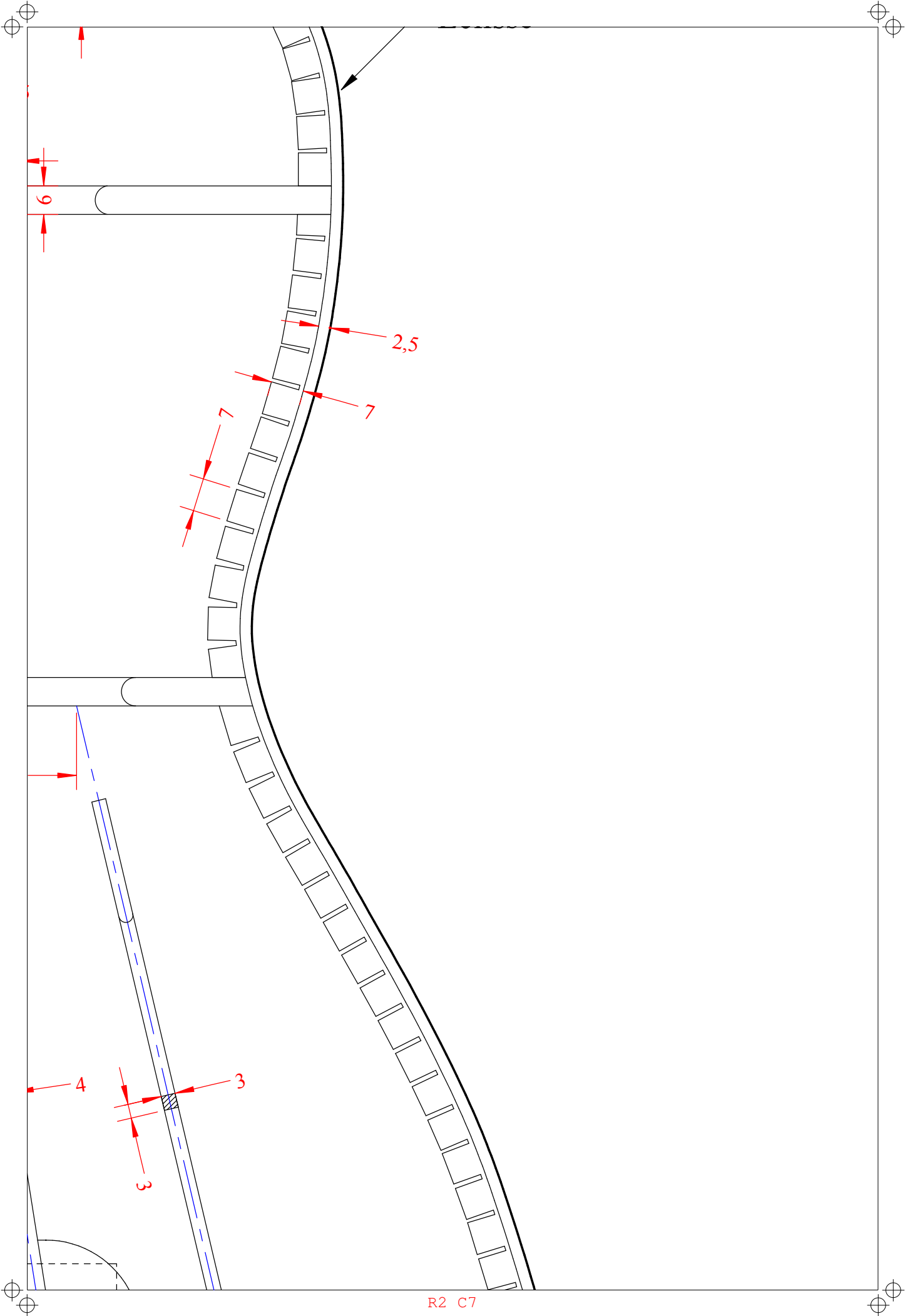
Niveau sillet de tête

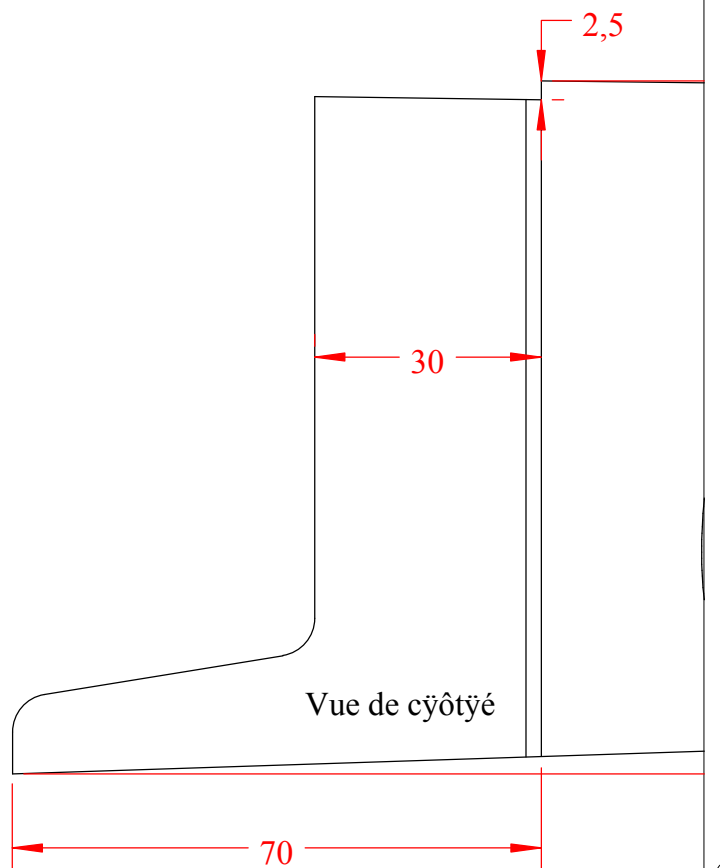
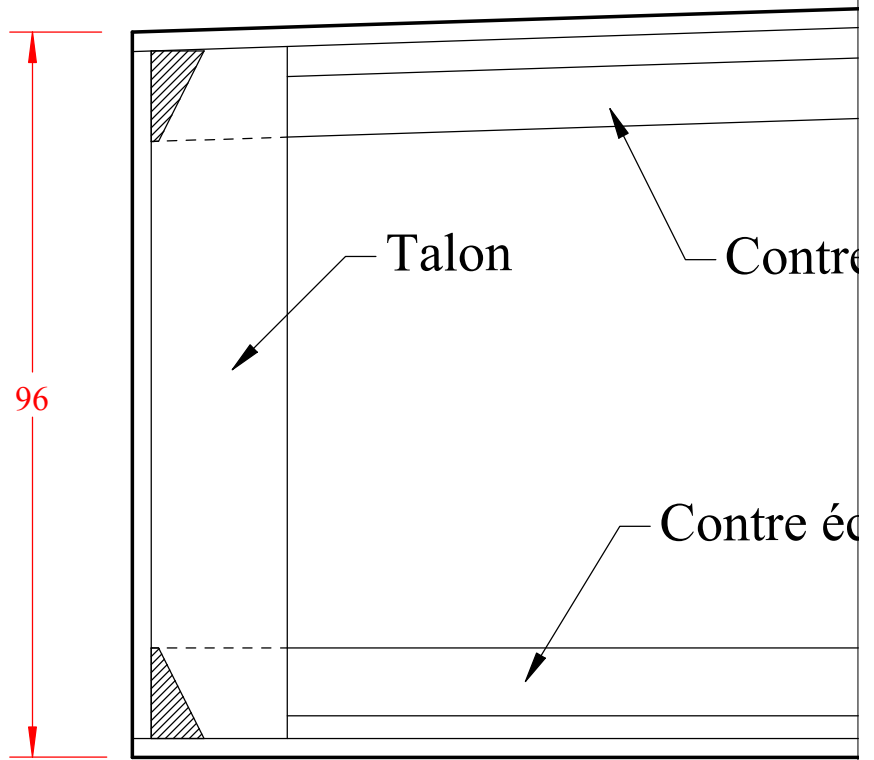




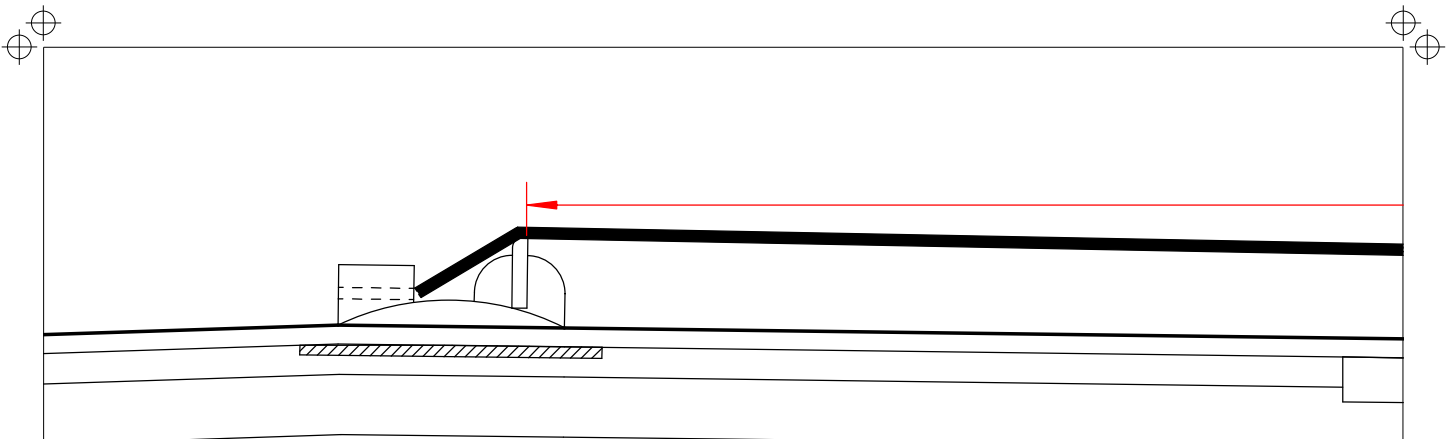


R2 C6



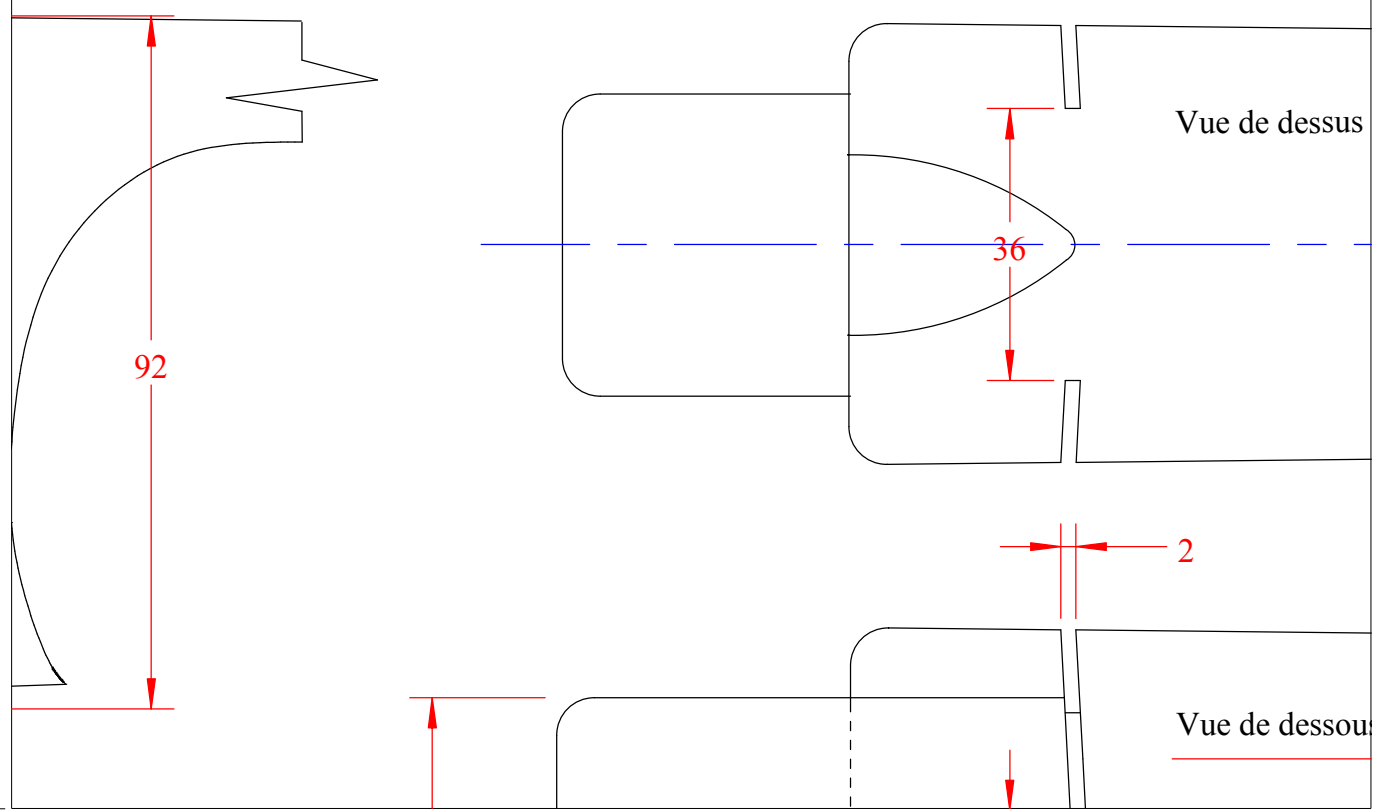
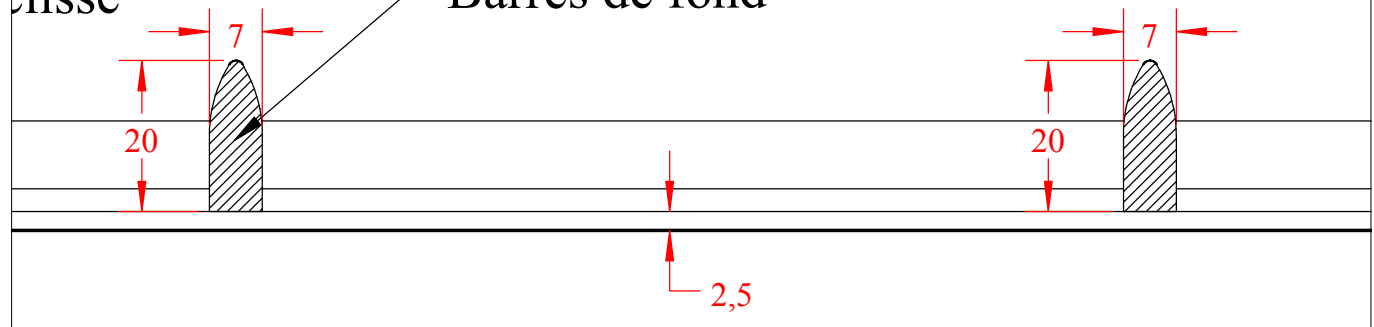


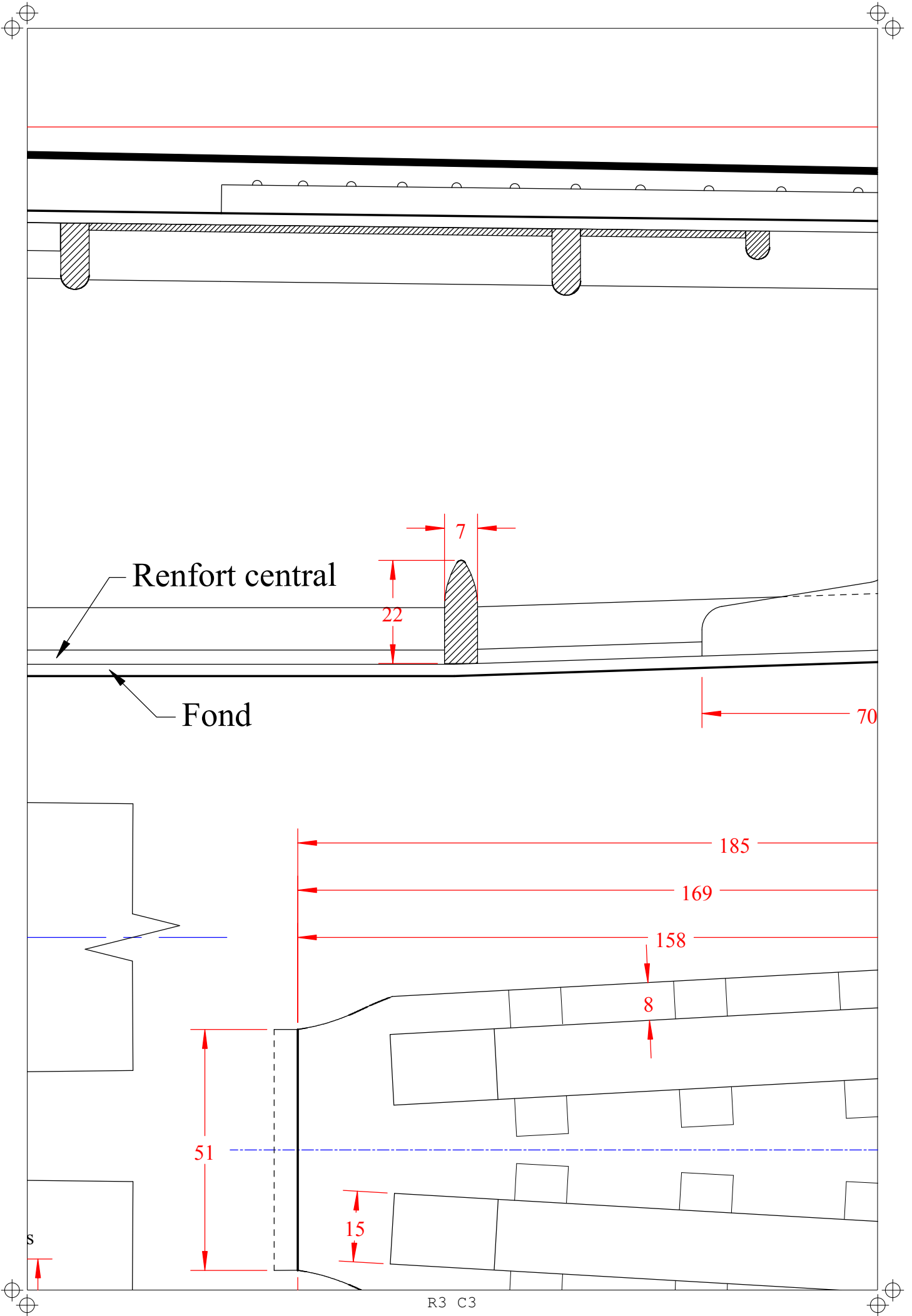
R3 C1



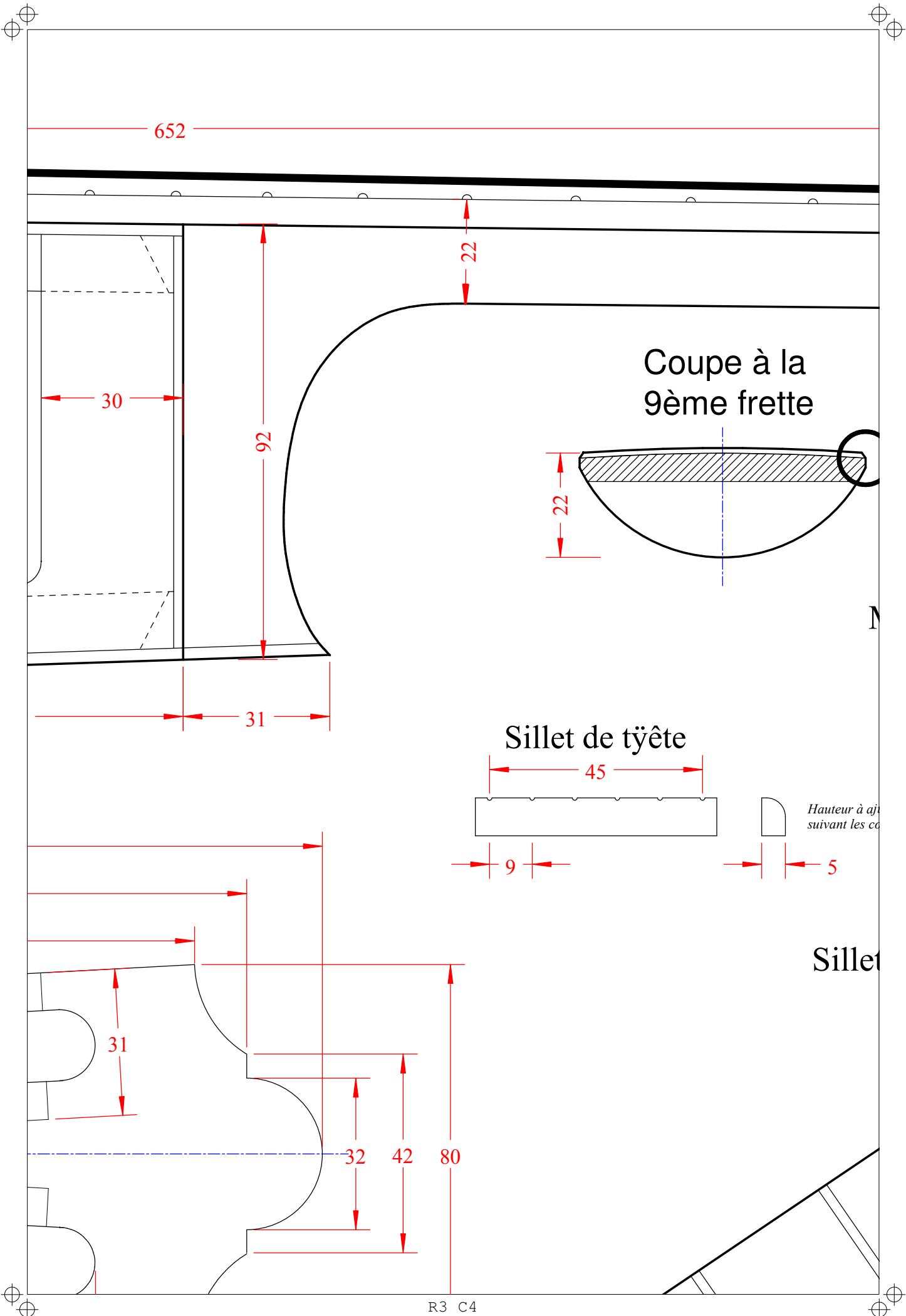
e éclisse

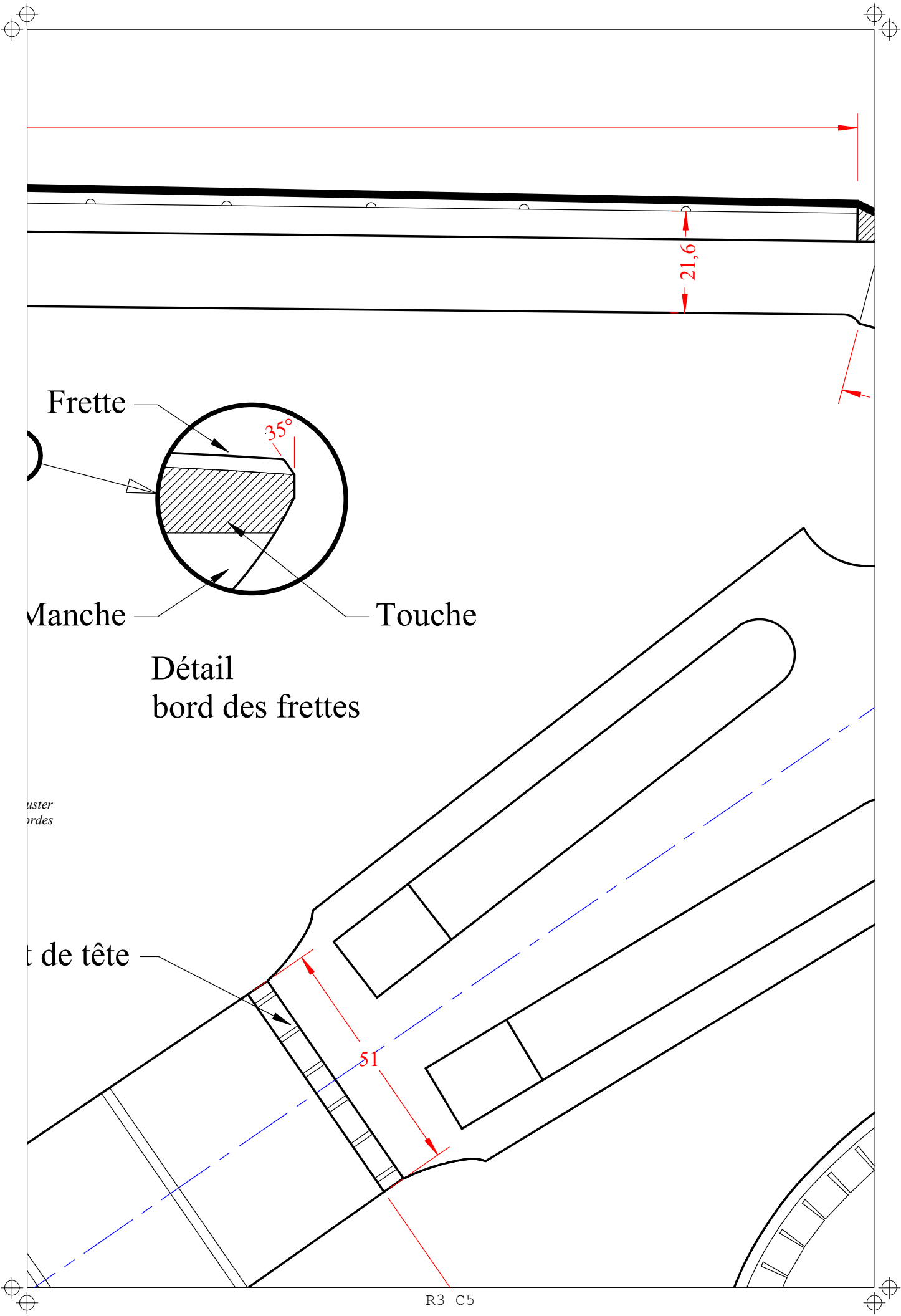
clisse Barres de fond





R3 C3





Frette

35°

21,6

Manche

Touche

Détail
bord des frettes

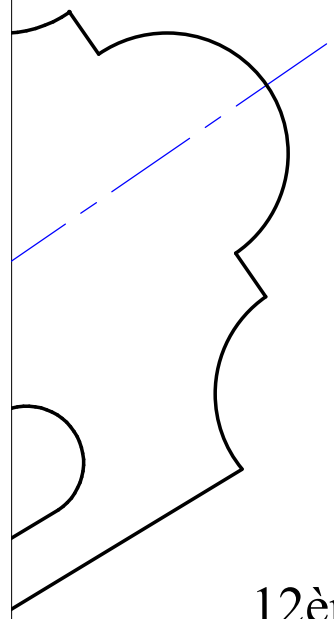
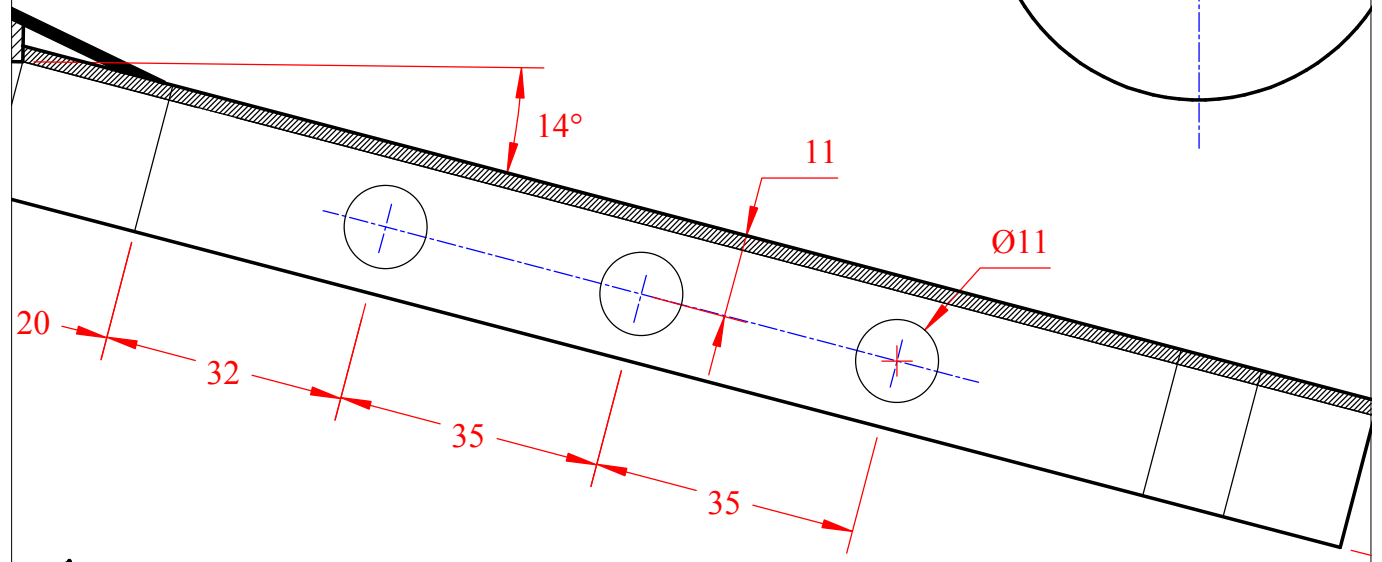
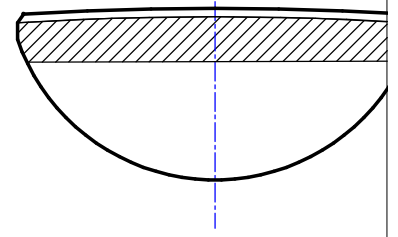
uster
brdes

t de tête

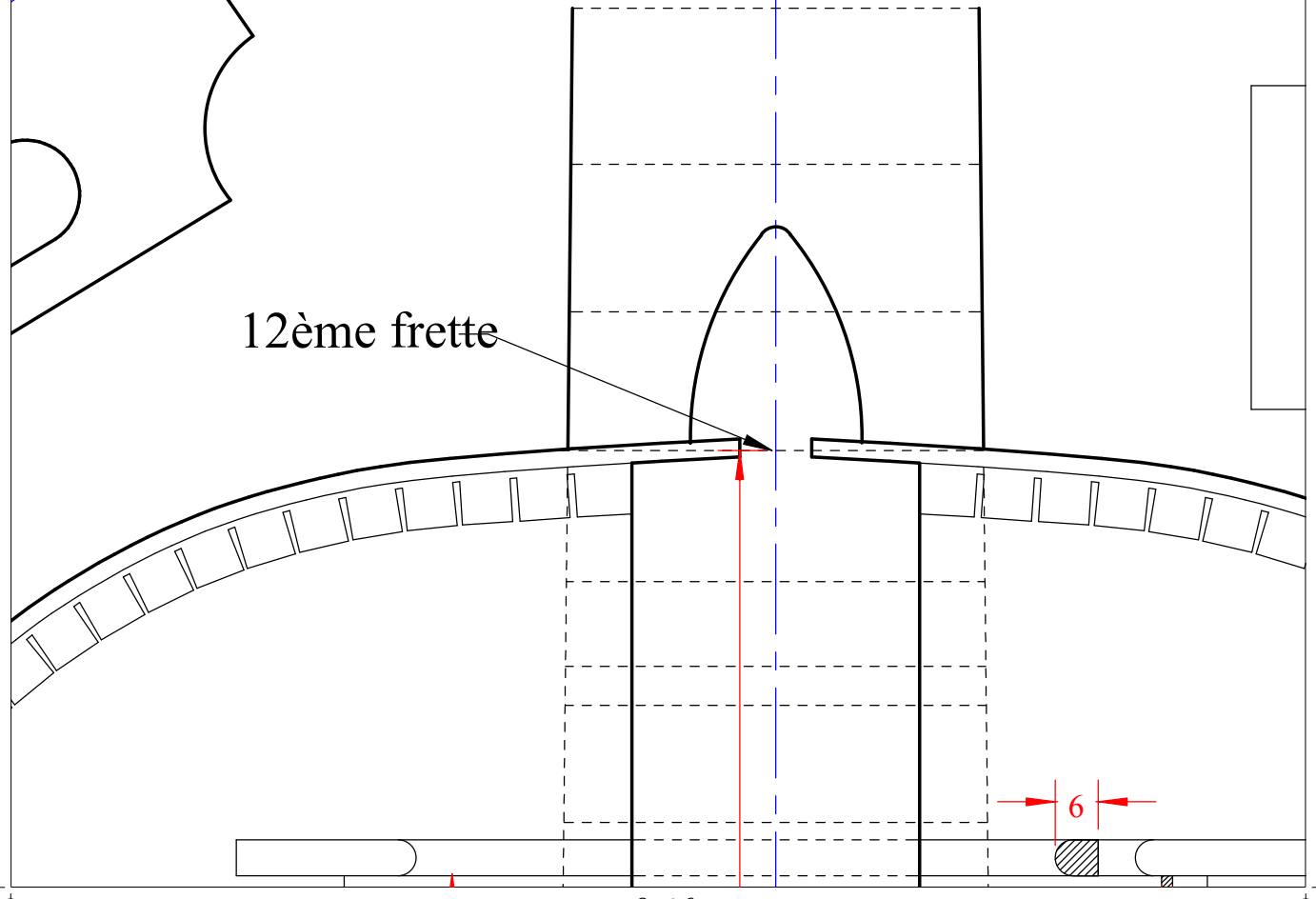
51

R3 C5

Coupe à la
1ère frette



12ème frette



R3 C6

