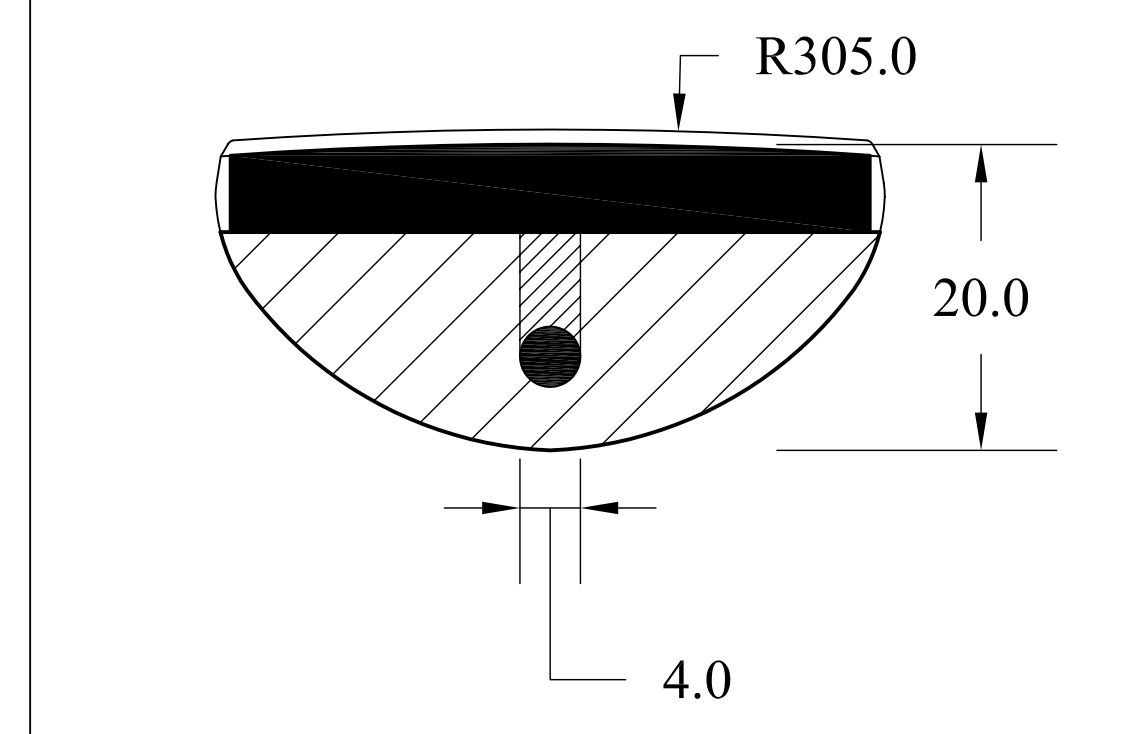
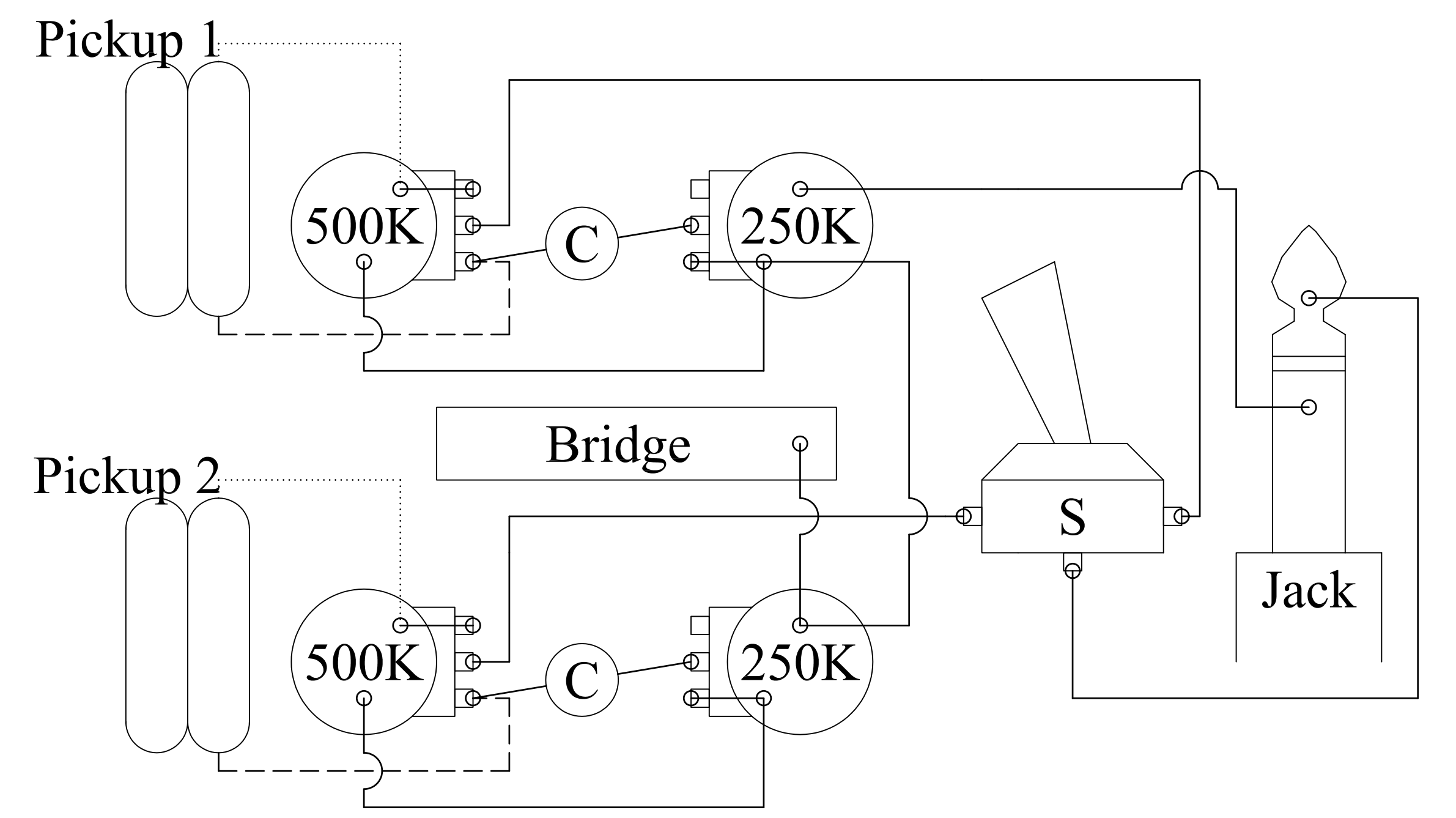
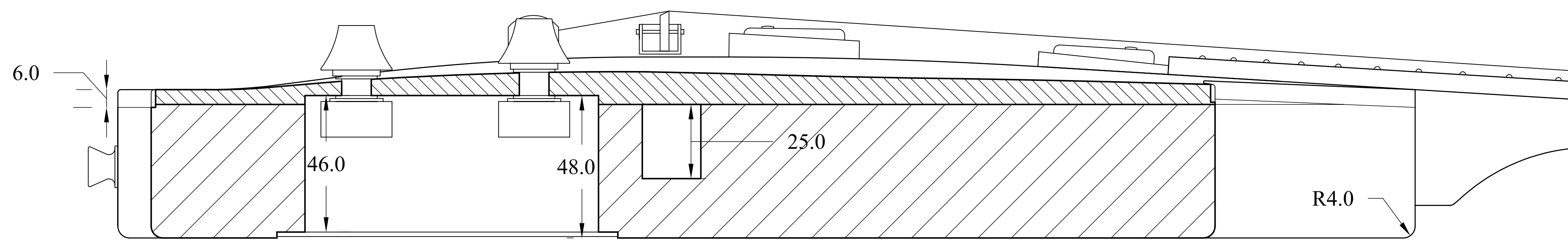


Description	
<b>Electronics</b>	
Legend:	
	Black wire
	Braided metal wire
	0.05mfd capacitor
	2.50K 25K LOG potentiometer
	500K 500K LOG potentiometer
	Pickup 1 498 Gibson "yair" humbucker
	Pickup 2 49T Gibson "yair" humbucker
	Bridge Bridge (connected to ground)
	Jack 3-way toggle switch

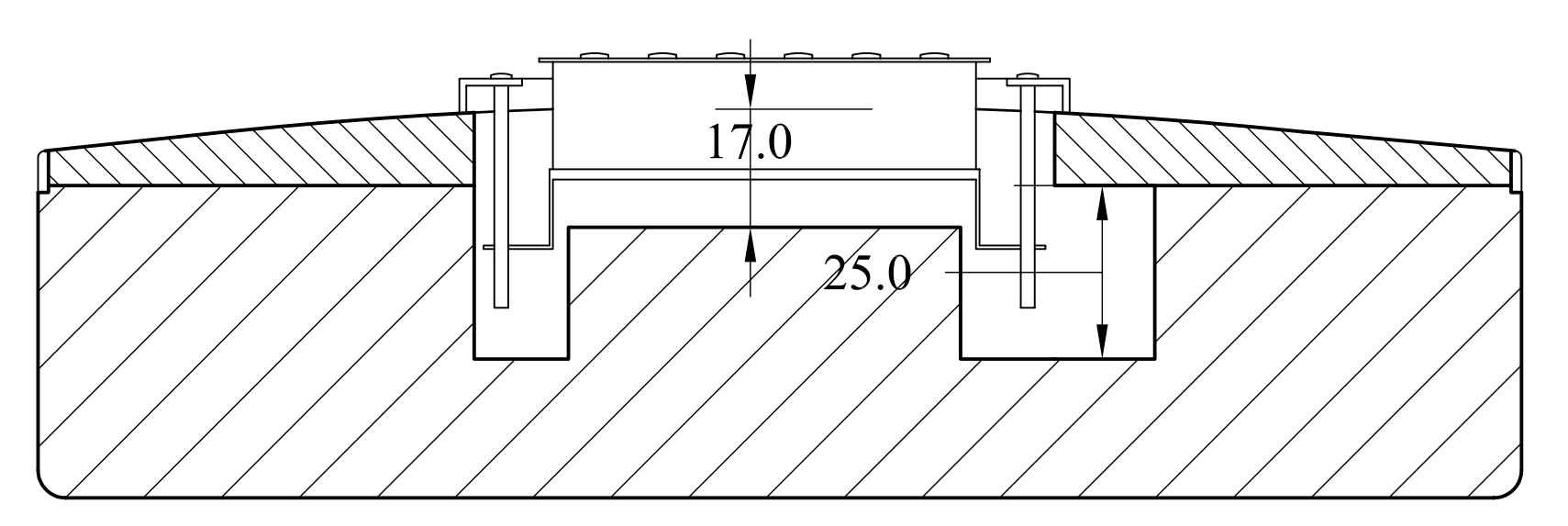
Description Scale  
Back plan view 0 20 40 60



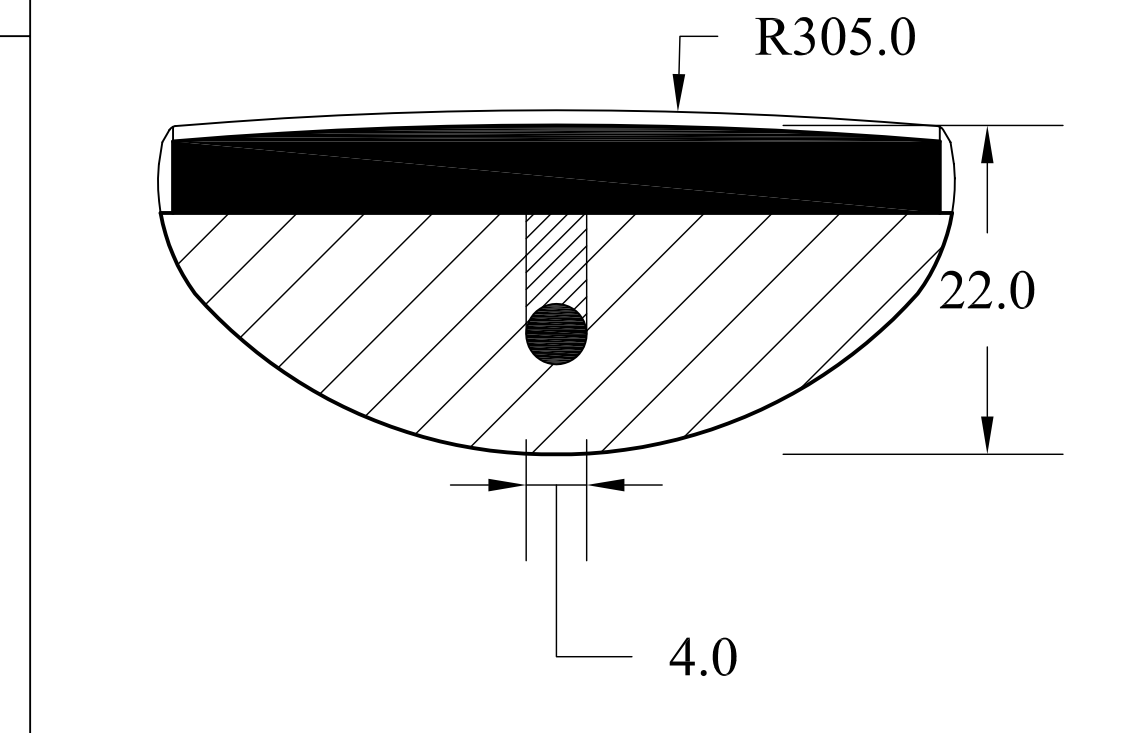
Description Scale  
Section DD' 0 5 10 15



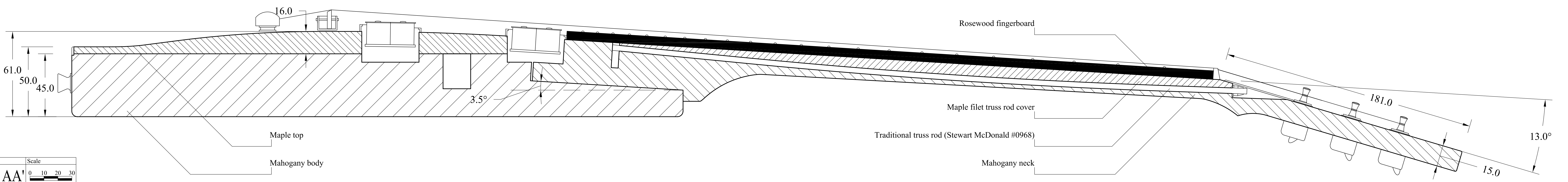
Description Scale  
Section BB' 0 10 20 30



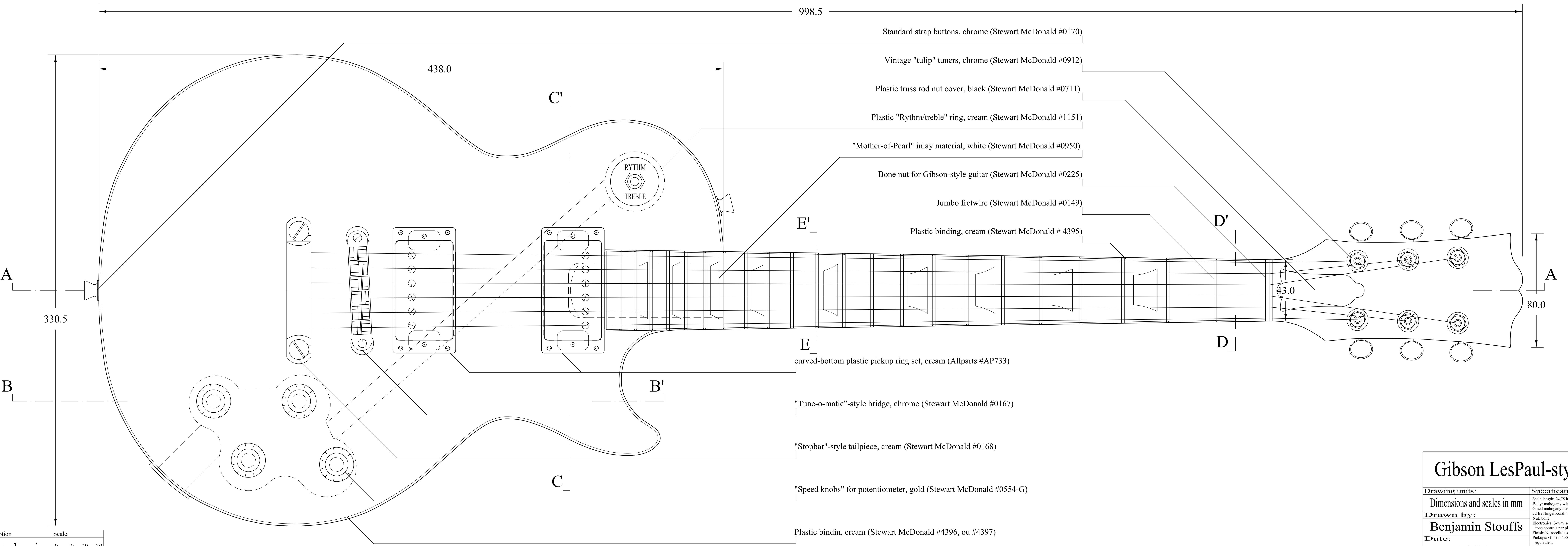
Description Scale  
Section CC' 0 10 20 30



Description Scale  
Section EE' 0 5 10 15



Description Scale  
Section AA' 0 10 20 30

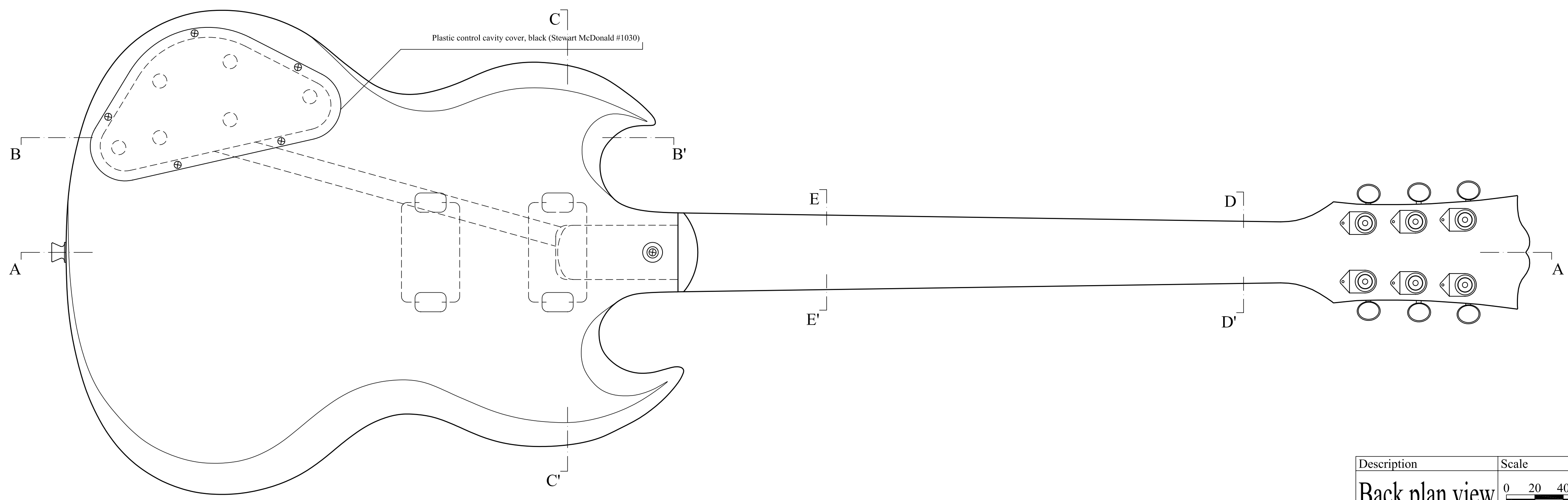


Description Scale  
Front plan view 0 10 20 30

### Gibson LesPaul-style guitar

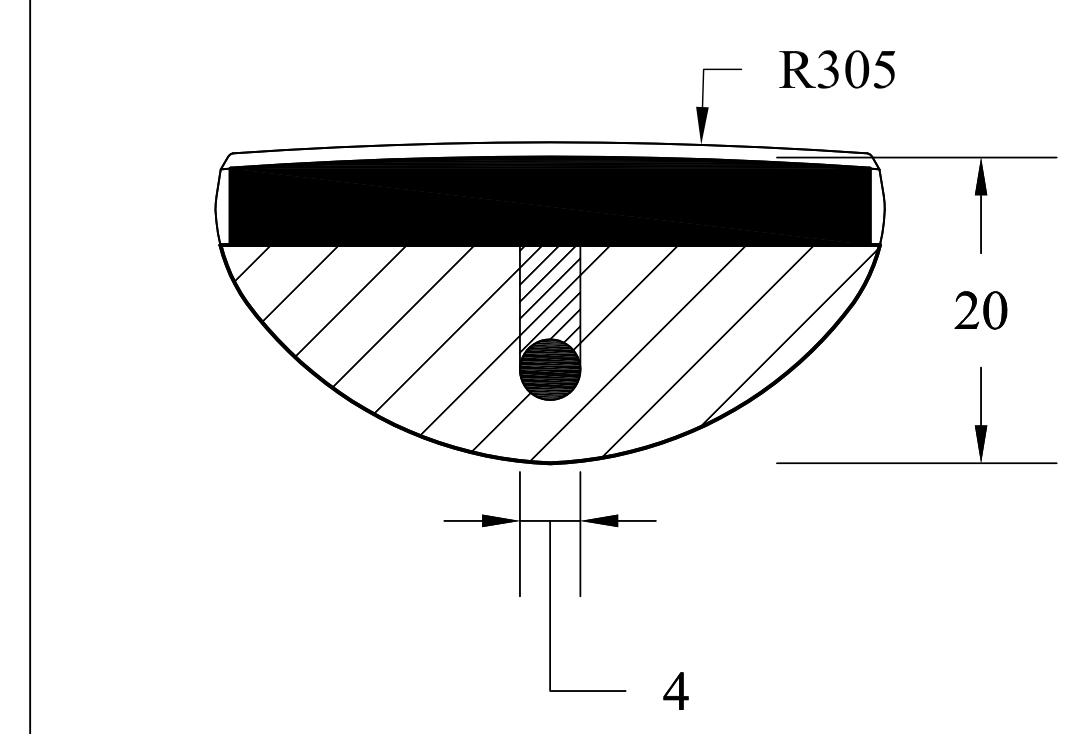
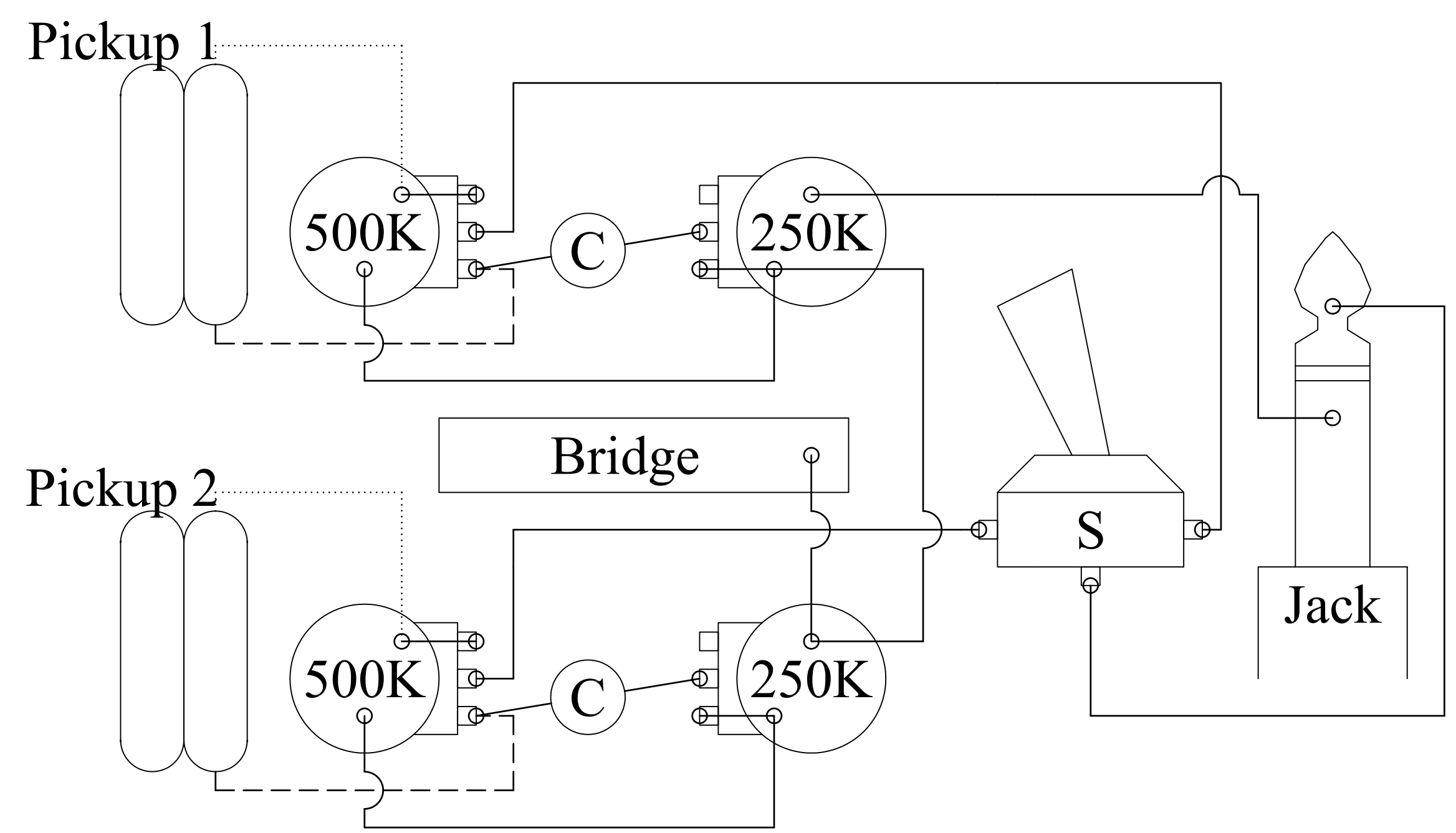
<b>Drawing units:</b>	<b>Specifications:</b>
Dimensions and scales in mm	Scale length: 24.75 inches (629 mm)
<b>Drawn by:</b>	Body: mahogany with maple top
<b>Benjamin Stouff</b>	Neck: mahogany
<b>Date:</b>	22 fret fingerboard, rosewood
	Star line
	Electronics: 3-way selector switch, individual volume and tone controls per pickup
	Finish: Nitrocellulose
	Pickups: Gibson #498 (neck) & Gibson #49T (bridge) or equivalent
	Bridge: Tune-o-matic with Stopbar tailpiece
	Tuners: Gibson "tulip" style

05/01/2005

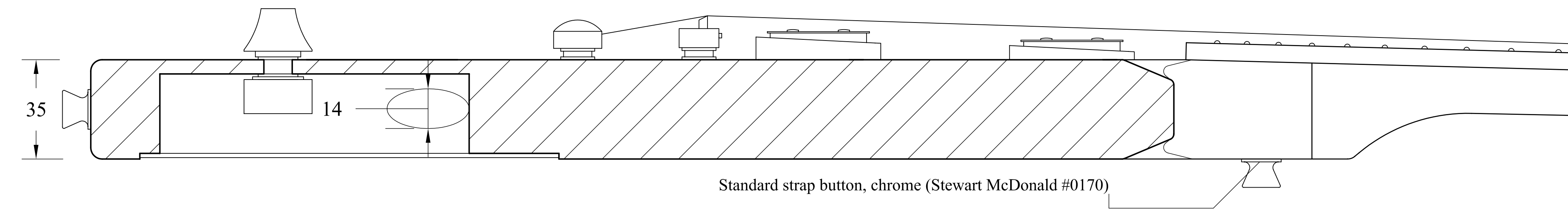


Description Scale  
**Back plan view** 0 20 40 60

Description	
<b>Electronics</b>	
Legend:	
	Black wire
	Braided metal wire
	0.05mfd capacitor
	2.50K 250K LOG potentiometer
	500K 500K LOG potentiometer
	Pickup 1 Gibson #908 "yair" humbucker
	Pickup 2 Gibson #907 "holic" humbucker
	Bridge (connected to ground)
	3-way toggle switch
	Jack Mono jack

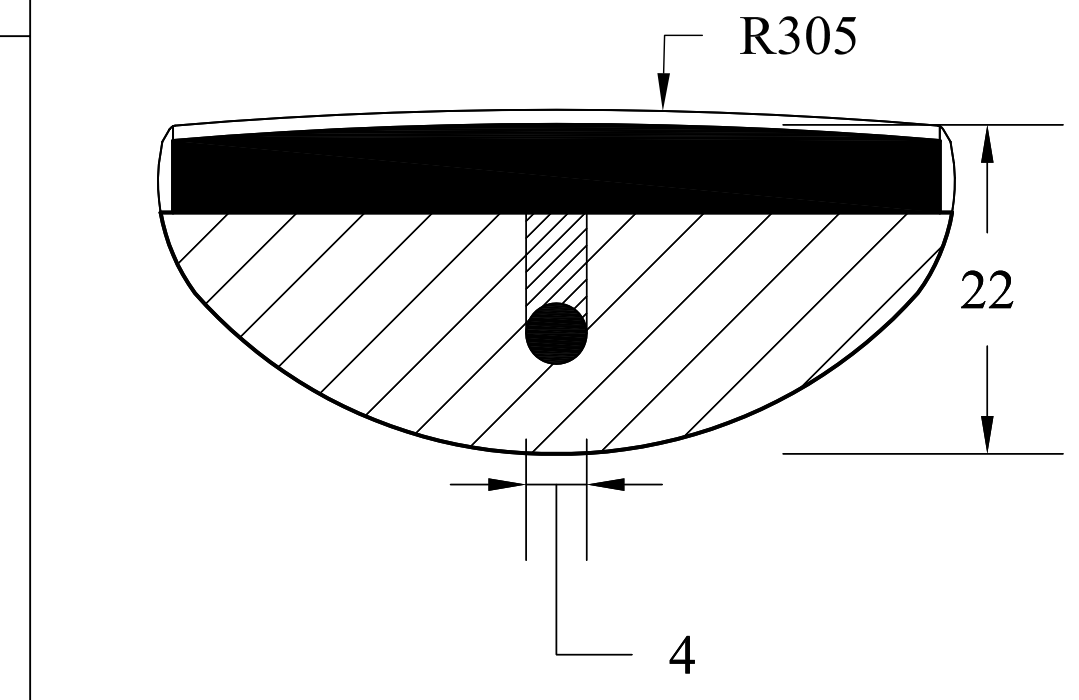
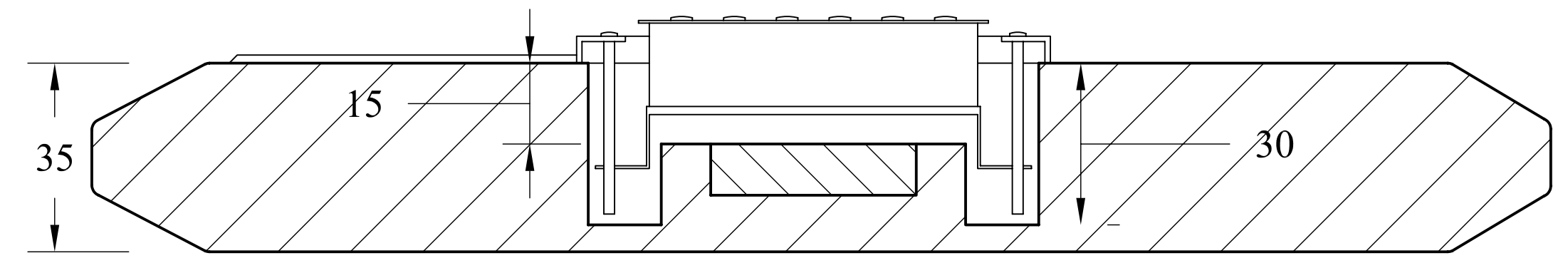


Description Scale  
**Section DD'** 0 5 10 15

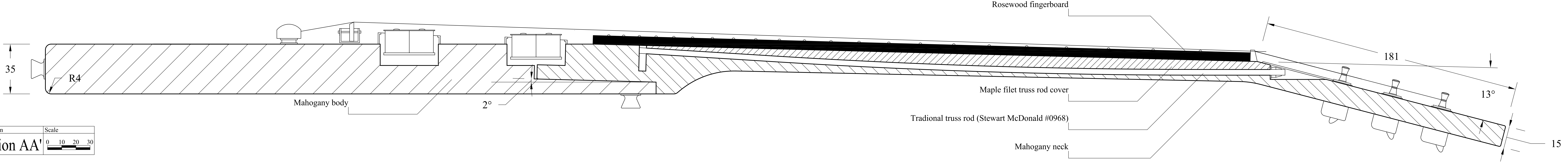


Description Scale  
**Section BB'** 0 10 20 30

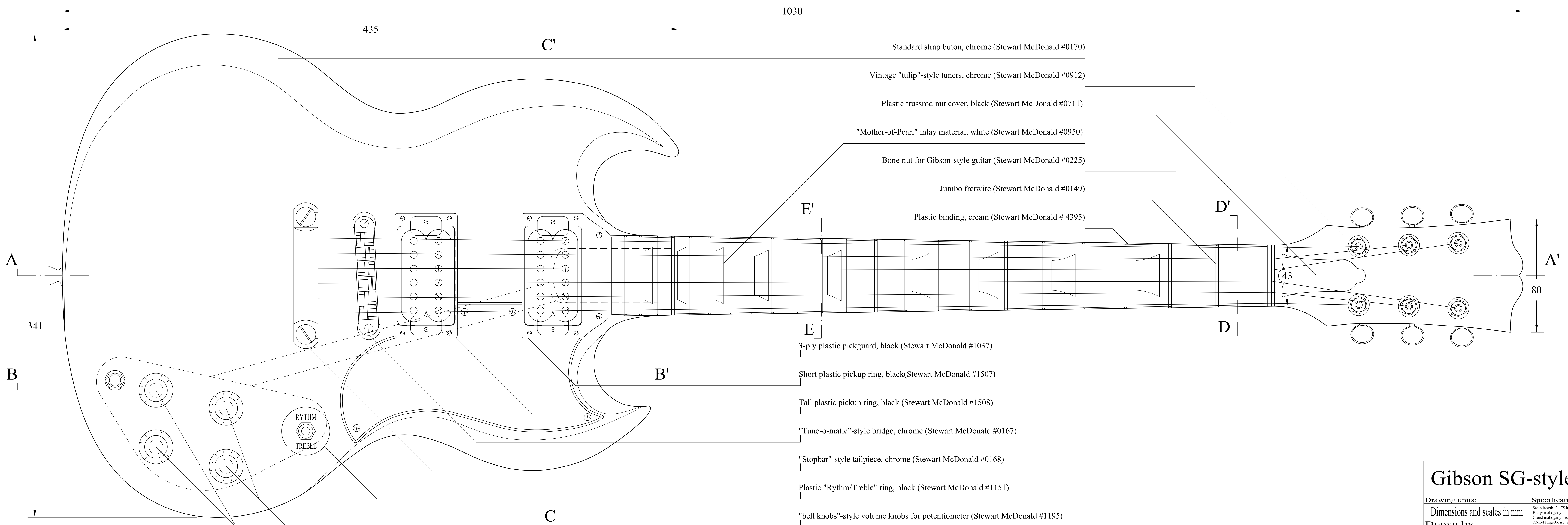
Description Scale  
**Section CC'** 0 10 20 30



Description Scale  
**Section EE'** 0 5 10 15



Description Scale  
**Section AA'** 0 10 20 30



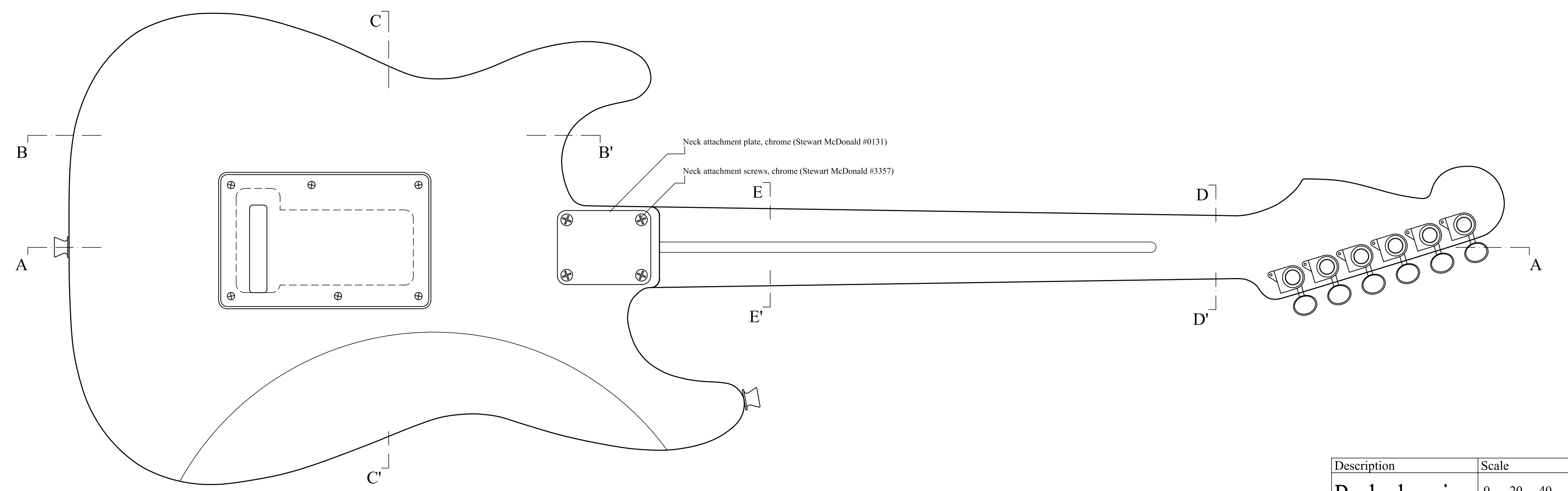
Description Scale  
**Front plan view** 0 10 20 30

- Standard strap buton, chrome (Stewart McDonald #0170)
- Vintage "tulip"-style tuners, chrome (Stewart McDonald #0912)
- Plastic trussrod nut cover, black (Stewart McDonald #0711)
- "Mother-of-Pearl" inlay material, white (Stewart McDonald #0950)
- Bone nut for Gibson-style guitar (Stewart McDonald #0225)
- Jumbo fretwire (Stewart McDonald #0149)
- Plastic binding, cream (Stewart McDonald # 4395)
- 3-ply plastic pickguard, black (Stewart McDonald #1037)
- Short plastic pickup ring, black(Stewart McDonald #1507)
- Tall plastic pickup ring, black (Stewart McDonald #1508)
- "Tune-o-matic"-style bridge, chrome (Stewart McDonald #0167)
- "Stopbar"-style tailpiece, chrome (Stewart McDonald #0168)
- Plastic "Rythm/Treble" ring, black (Stewart McDonald #1151)
- "bell knobs"-style volume knobs for potentiometer (Stewart McDonald #1195)
- "bell knobs"-style tone knobs for potentiometer (Stewart McDonald #1197)

# Gibson SG-style guitar

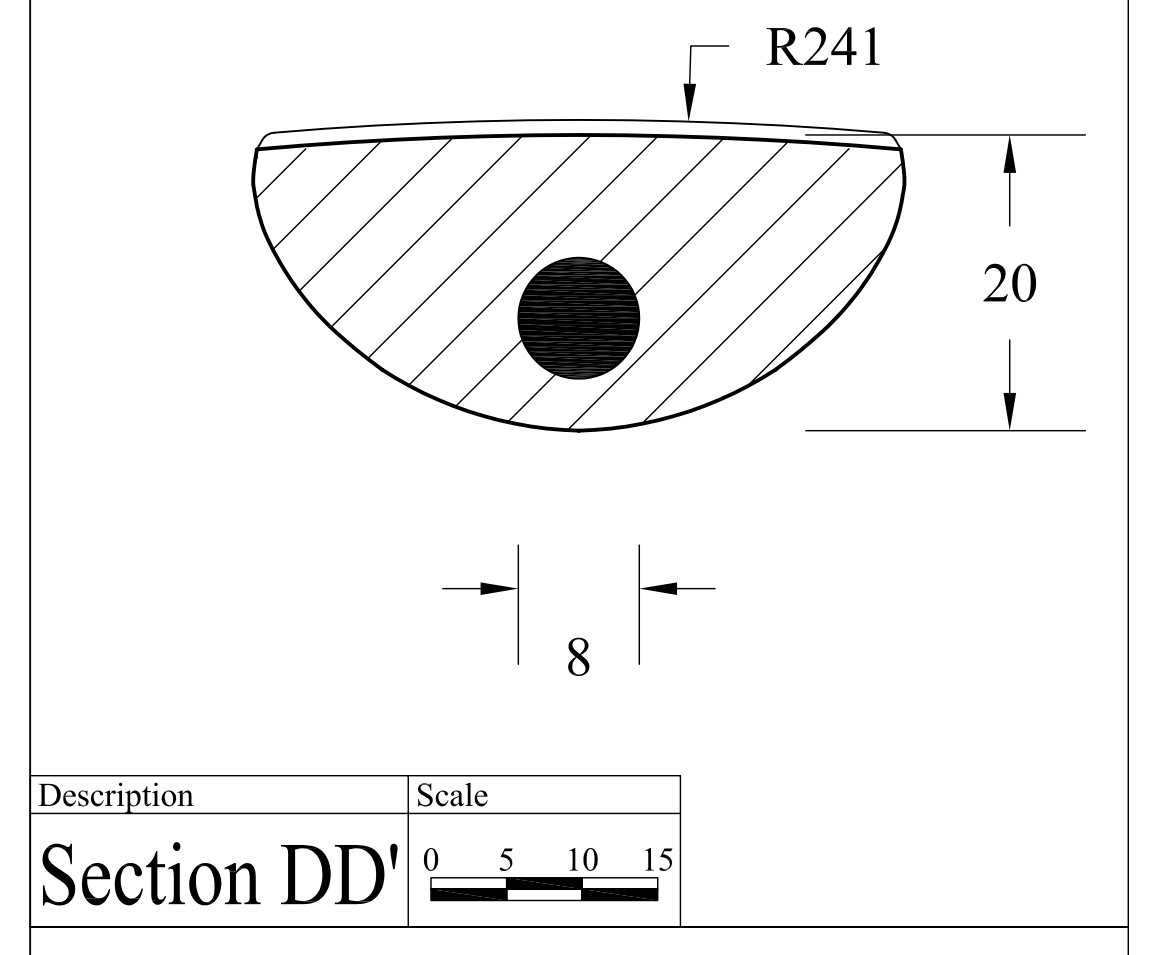
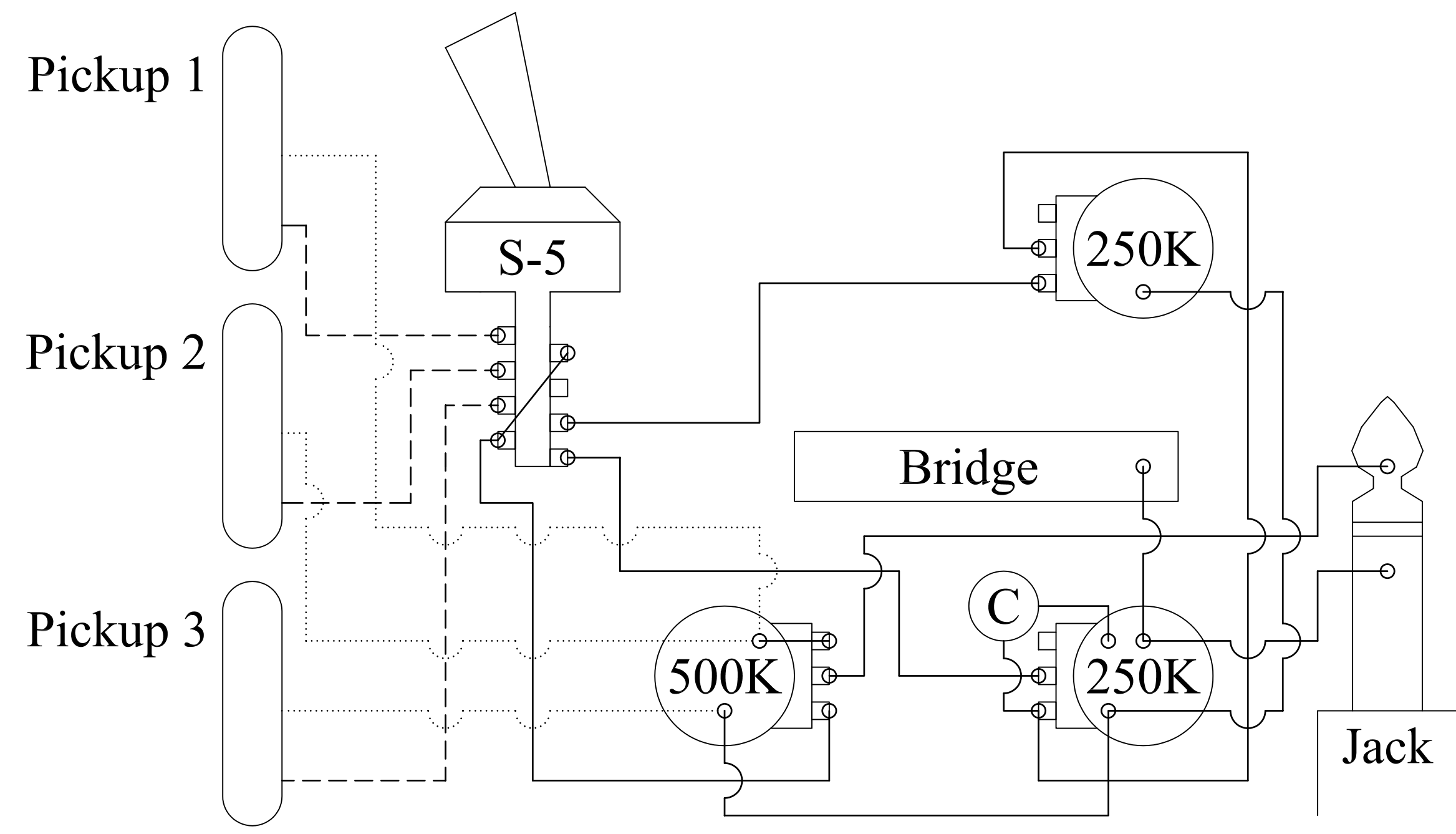
<b>Drawing units:</b>	<b>Specifications:</b>
Dimensions and scales in mm	Scale length: 24.75 inches (629 mm)
<b>Drawn by:</b>	Body: mahogany
<b>Benjamin Stouffs</b>	Neck: mahogany
<b>Date:</b>	22-fret fingerboard: rosewood
05/01/2005	Star: bone
	Electronics: 3-way toggle switch, individual volume and tone controls per pickup
	Finish: Nitrocellulose
	Pickups: Gibson #908 (neck) & Gibson #907 (bridge) or equivalent
	Bridge: Tune-o-matic with Stopbar tailpiece
	Tuners: Gibson "tulip"-style



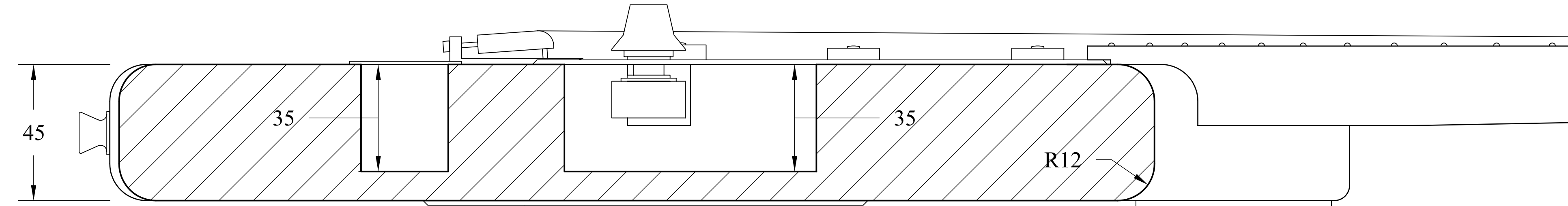


Description Scale  
**Back plan view** 0 20 40 60

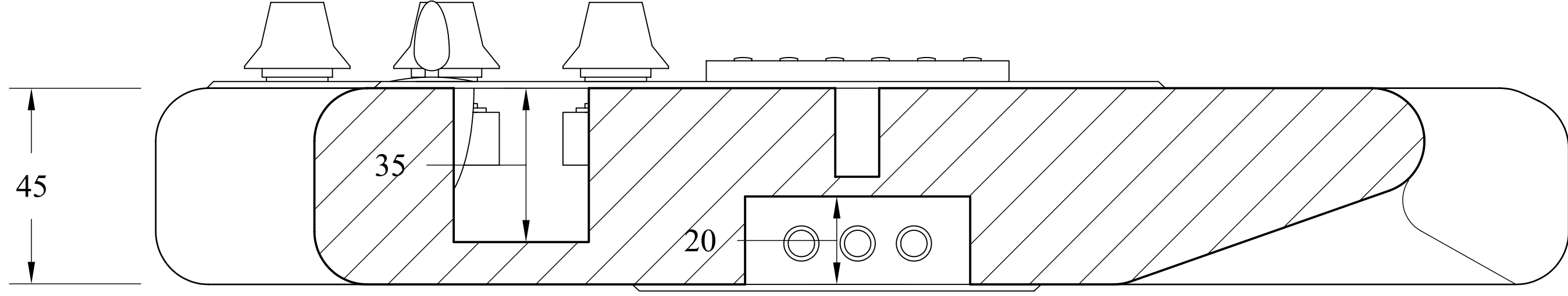
Description	
<b>Electronics</b>	
Legend:	
.....	Black wire
.....	White wire
◀	0.05mfd capacitor
250K	250K LOG potentiometer
500K	500K LOG potentiometer
Pickup 1	"bridge" single-coil pickup
Pickup 2	"middle" single-coil pickup
Pickup 3	"neck" single-coil pickup
Bridge	Bridge (connected to ground)
S-S	5-way selector switch
Jack	Mono jack



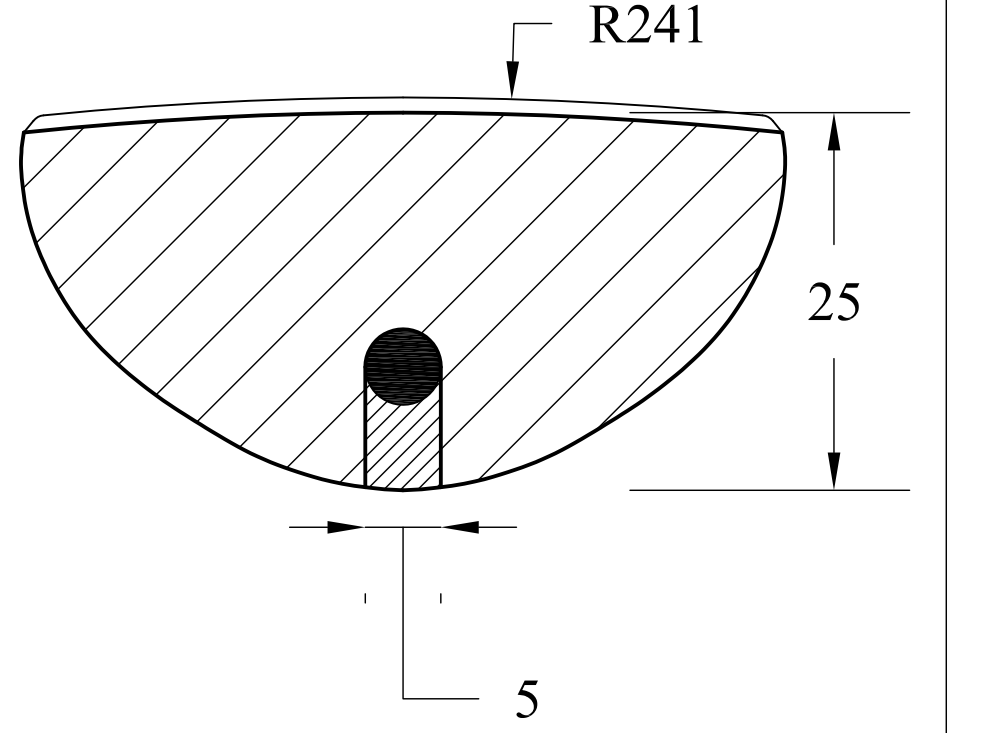
Description Scale  
**Section DD** 0 5 10 15



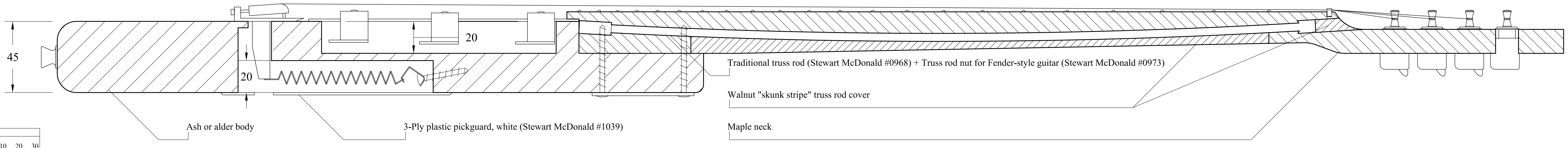
Description Scale  
**Section BB** 0 10 20 30



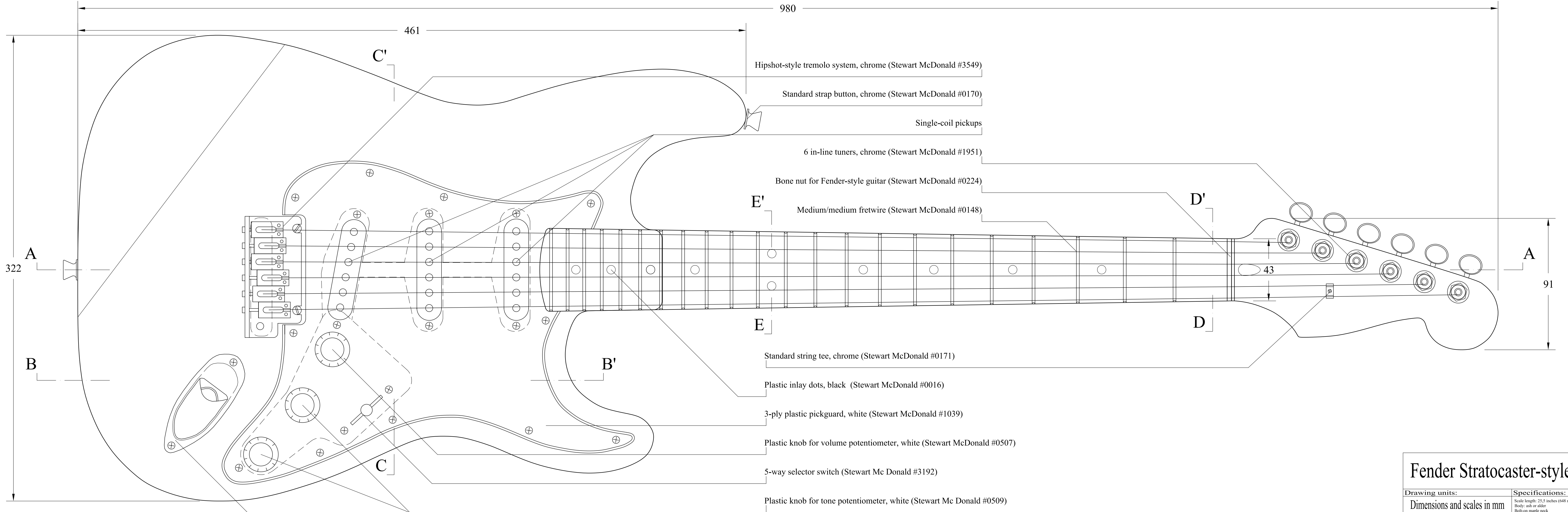
Description Scale  
**Section CC** 0 10 20 30



Description Scale  
**Section EE** 0 5 10 15



Description Scale  
**Section AA** 0 10 20 30



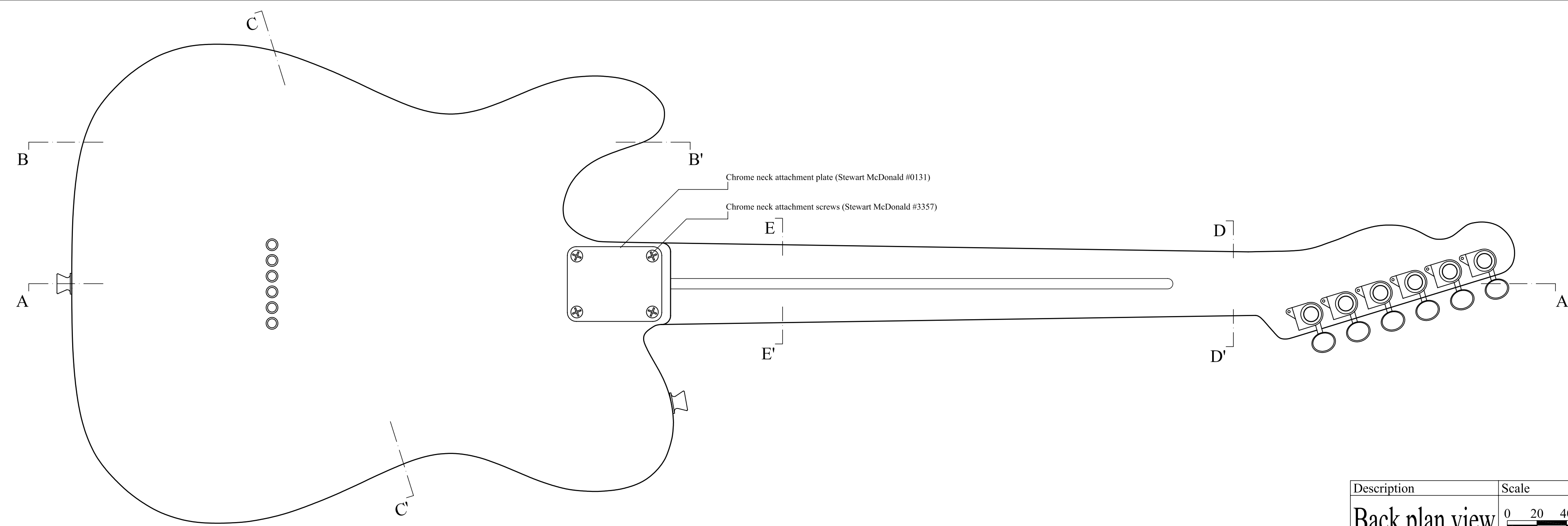
Description Scale  
**Front plan view** 0 10 20 30

- Hipshot-style tremolo system, chrome (Stewart McDonald #3549)
- Standard strap button, chrome (Stewart McDonald #0170)
- Single-coil pickups
- 6 in-line tuners, chrome (Stewart McDonald #1951)
- Bone nut for Fender-style guitar (Stewart McDonald #0224)
- Medium/medium fretwire (Stewart McDonald #0148)
- Standard string tee, chrome (Stewart McDonald #0171)
- Plastic inlay dots, black (Stewart McDonald #0016)
- 3-ply plastic pickguard, white (Stewart McDonald #1039)
- Plastic knob for volume potentiometer, white (Stewart McDonald #0507)
- 5-way selector switch (Stewart McDonald #3192)
- Plastic knob for tone potentiometer, white (Stewart McDonald #0509)
- Strat-style jack plate, chrome (Stewart McDonald #0134)

## Fender Stratocaster-style guitar

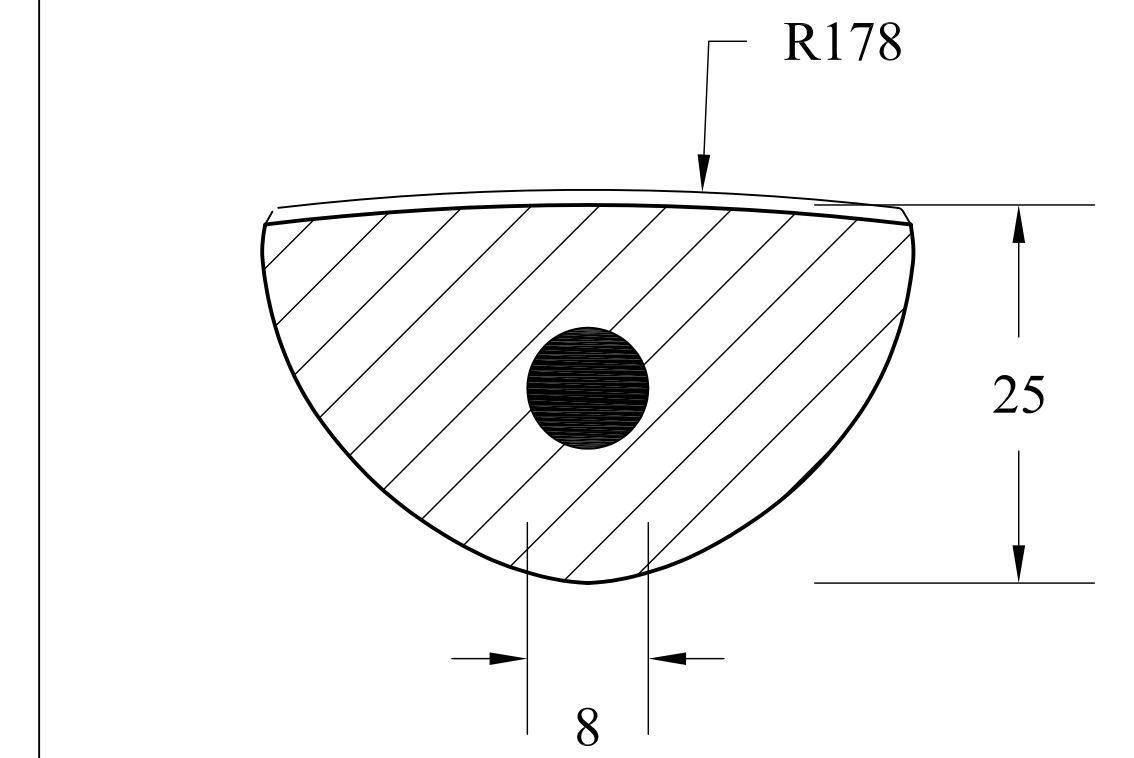
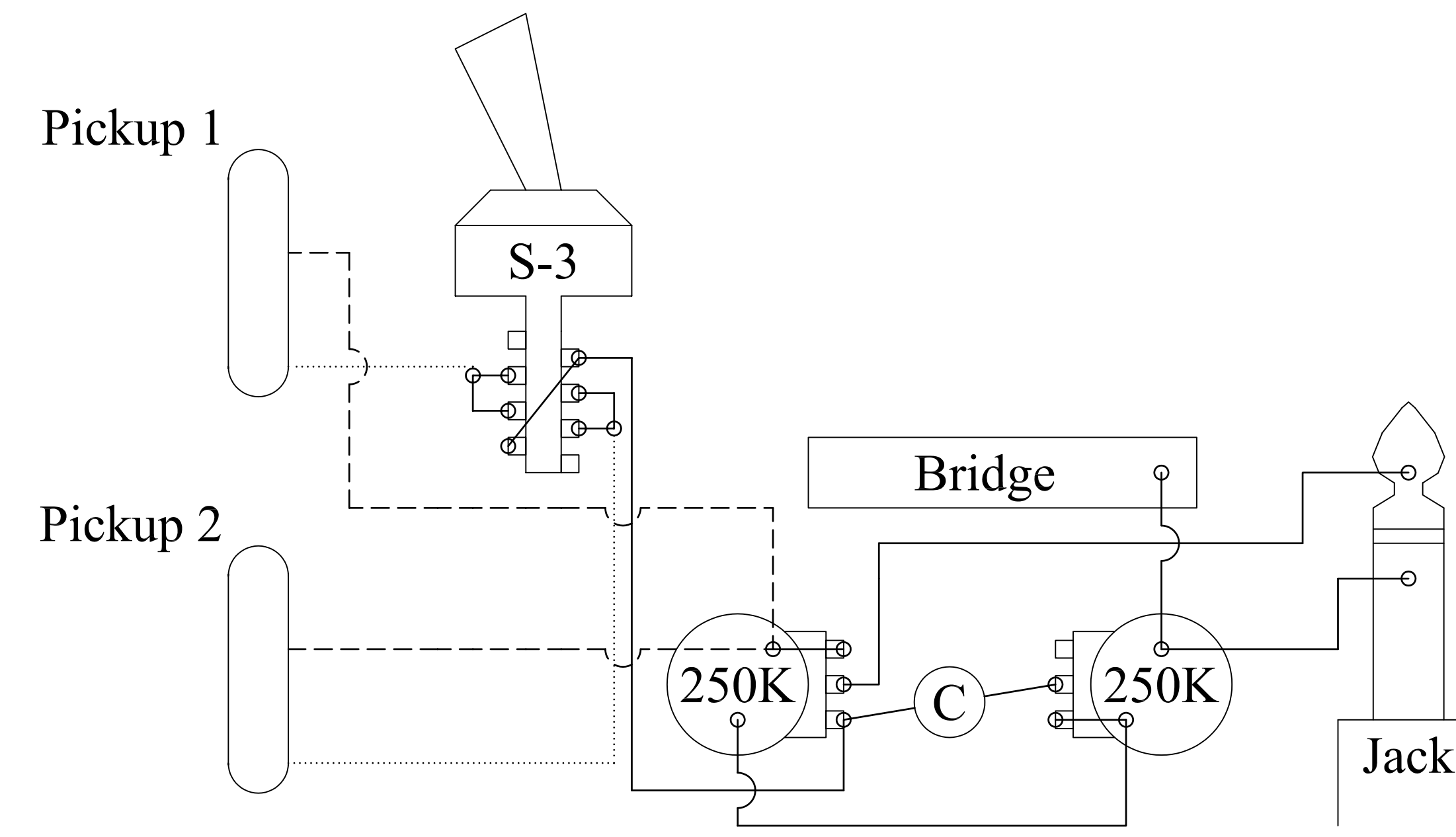
<b>Drawing units:</b>	<b>Specifications:</b>
Dimensions and scales in mm	Scale length: 25.5 inches (648 mm)
<b>Drawn by:</b>	Body: ash or alder
<b>Benjamin Stouff</b>	Neck: maple
<b>Date:</b>	22-fret fingerboard: maple
	Neck: bone
	Electronics: 5-way selector switch, general volume control,
	"neck" pickup tone control, "middle" and "bridge" pickups
	tone control
	Bridge: Nonocatholon or polyurethane
	Pickups: Fender single-coil or equivalent
	Tremolo: Fender 6-in-line

05/01/2005

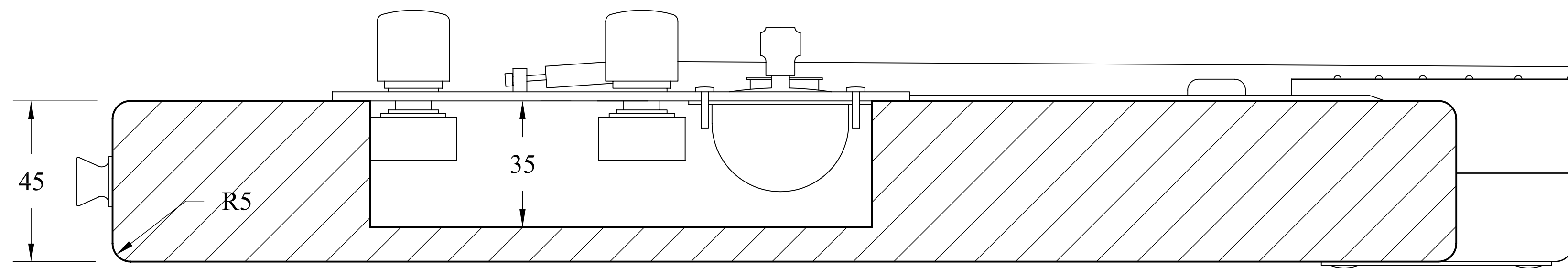


Description Scale  
Back plan view 0 20 40 60

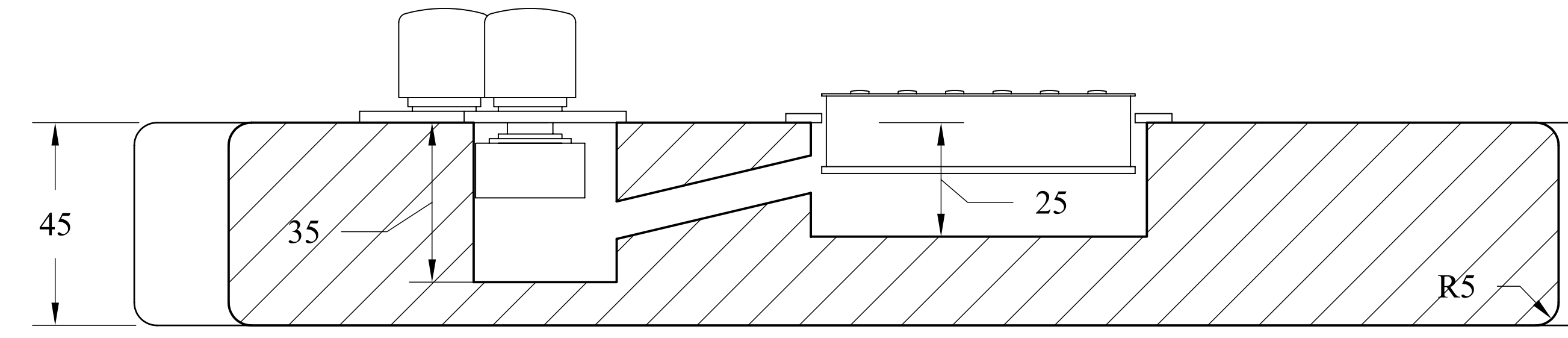
Description	
<b>Electronics</b>	
Legend:	Black wire
	White wire
	0.05mfd capacitor
	250K 250K LOG Potentiometer
Pickup 1	"Bridge" single-coil pickup
Pickup 2	"Neck" single-coil pickup
Bridge	Bridge (connected to ground)
S-3	3-way selector switch
Jack	Mono jack



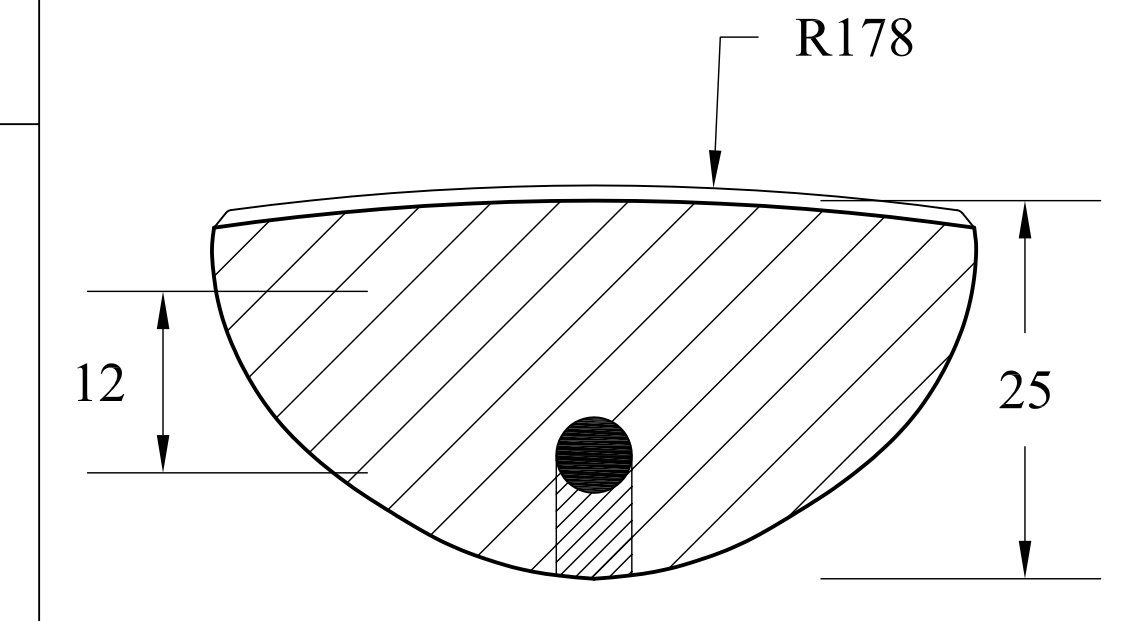
Description Scale  
Section DD' 0 5 10 15



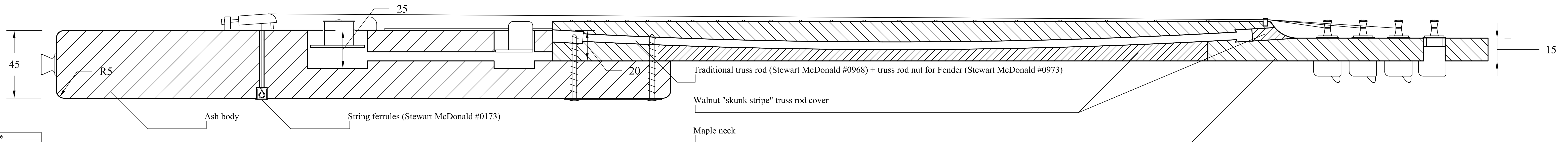
Description Scale  
Section BB' 0 10 20 30



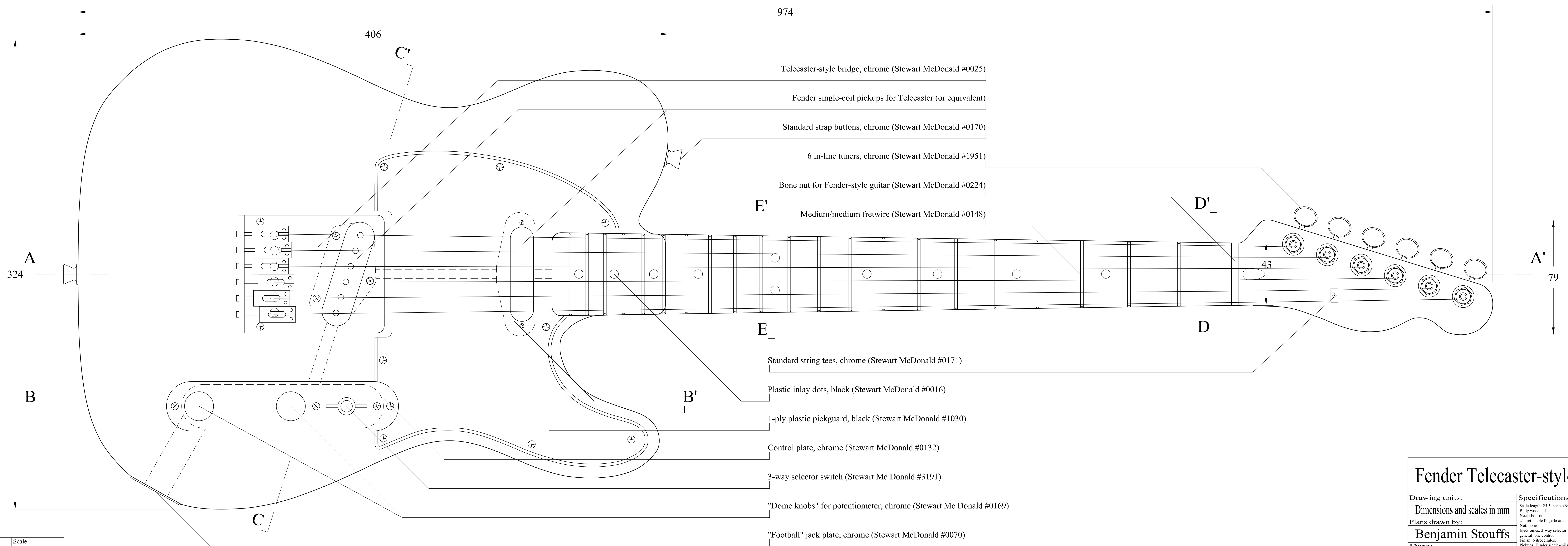
Description Scale  
Section CC' 0 10 20 30



Description Scale  
Section EE' 0 5 10 15



Description Scale  
Section AA' 0 10 20 30



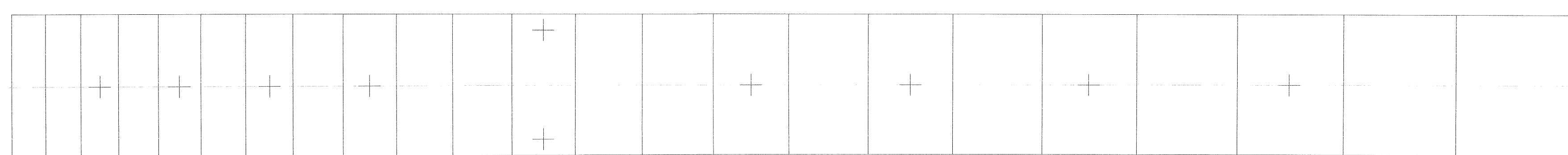
Description Scale  
Front plan view 0 10 20 30

### Fender Telecaster-style guitar

<b>Drawing units:</b>	<b>Specifications:</b>
Dimensions and scales in mm	Scale length: 25.5 inches (648 mm)
Plans drawn by:	Body wood: ash
<b>Benjamin Stouff</b>	Neck: mahogany
<b>Date:</b>	21-fret maple fingerboard
05/01/2005	Star: none
	Electronics: 3-way selector switch, general volume control, general tone control
	Finish: Nitrocellulose
	Pickups: Fender single-coil
	Bridge: Hardtail string-through-body type with integrated bridge pickup hole
	Tuners: Fender tuning pegs

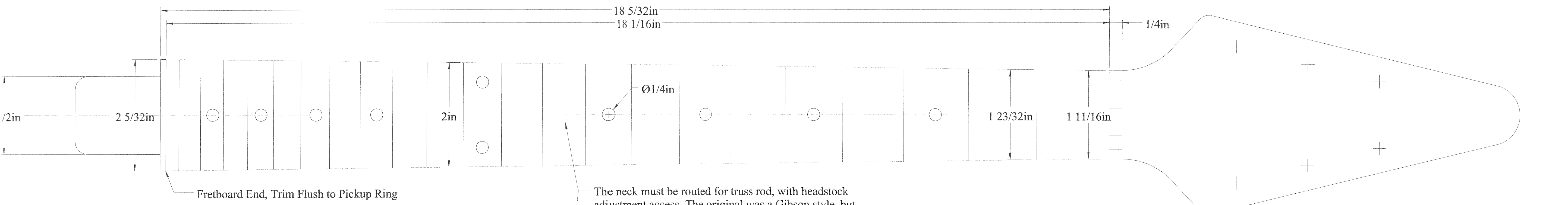
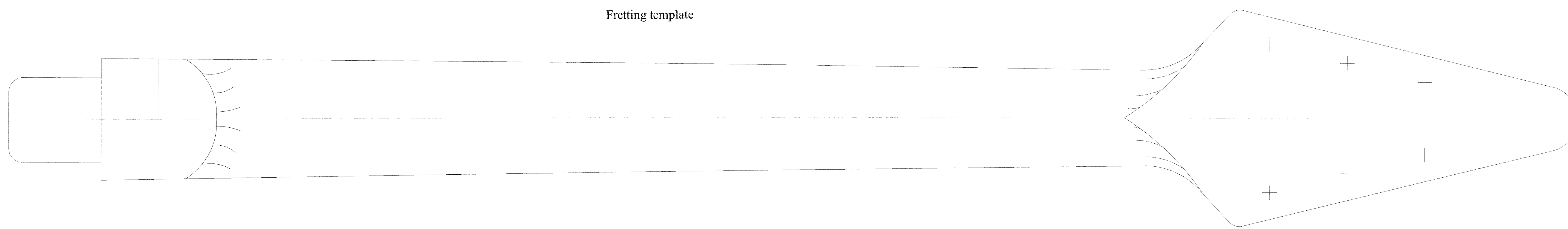


Fret positions	
Fret	Distance from nut
1	1.389
2	2.700
3	3.937
4	5.105
5	6.207
6	7.247
7	8.229
8	9.156
9	10.031
10	10.857
11	11.636
12	12.375
13	13.066
14	13.720
15	14.339
16	14.923
17	15.474
18	15.994
19	16.485
20	16.948
21	17.385
22	17.797



Fretting template

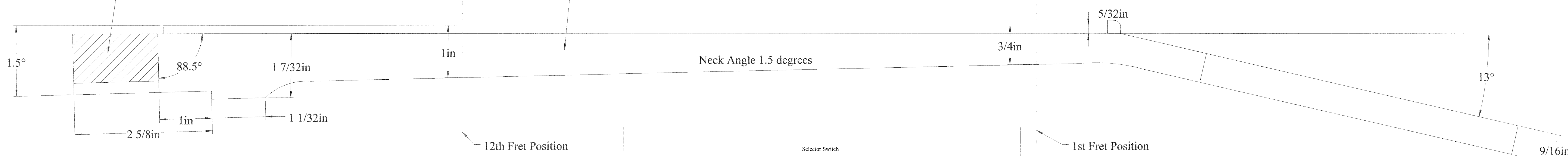
Note: The fretboard radius is 12".  
 The fretboard scale length is a TRUE 24 3/4". NOT Gibson's standard '24 9/16" + compensation = 24 3/4".  
 If you order a pre-slotted fretboard, be sure to order the correct scale length, or move the bridge mounting posts.



Fretboard End, Trim Flush to Pickup Ring

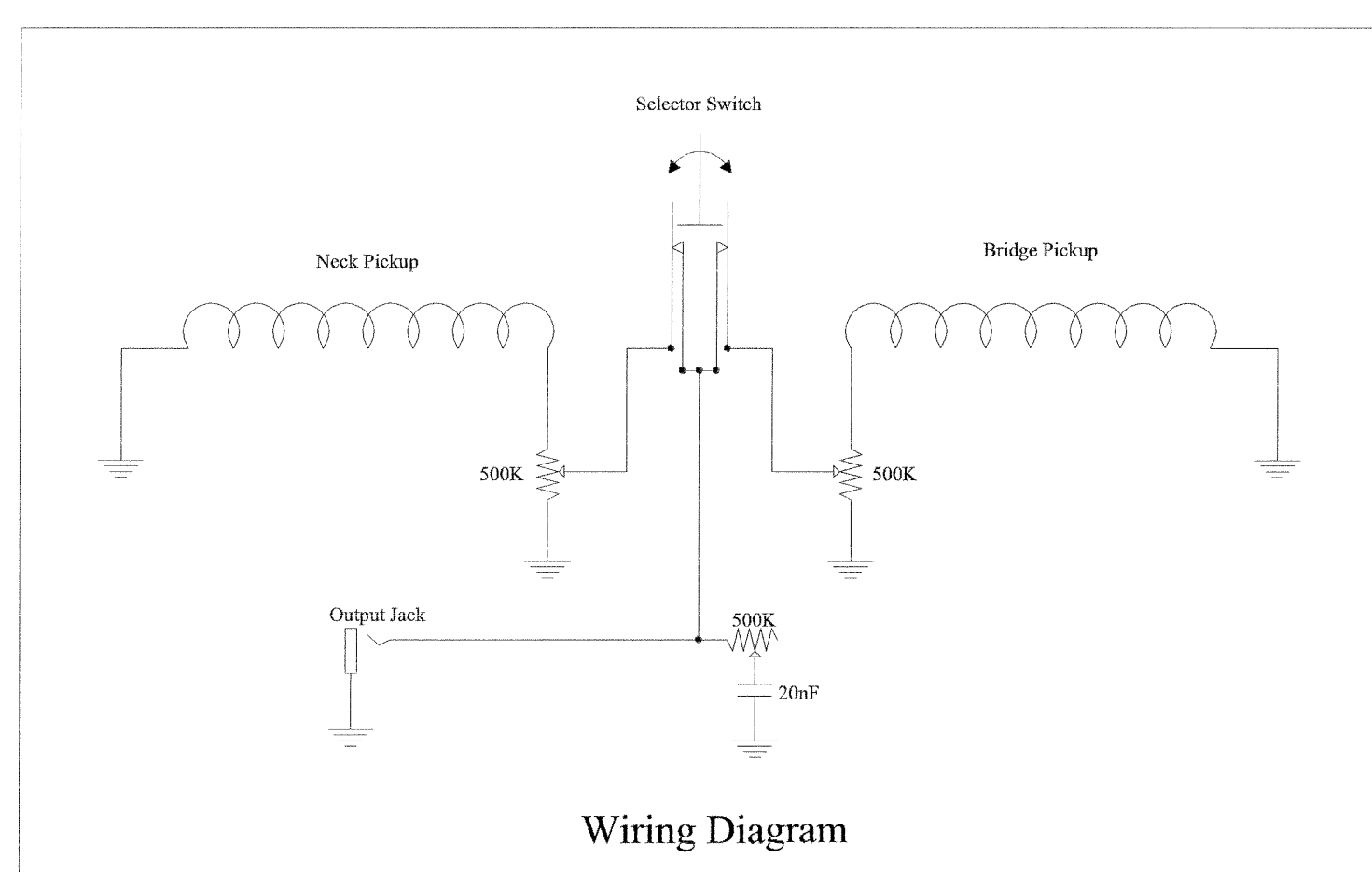
The neck must be routed for truss rod, with headstock adjustment access. The original was a Gibson style, but a different style could be used. Follow the manufacturer's directions for installation.

Tool marks in cavity indicate that the neck pocket and tenon were created first and fitted together. This area of the tenon was removed when the pickup cavity was routed. See Construction Note



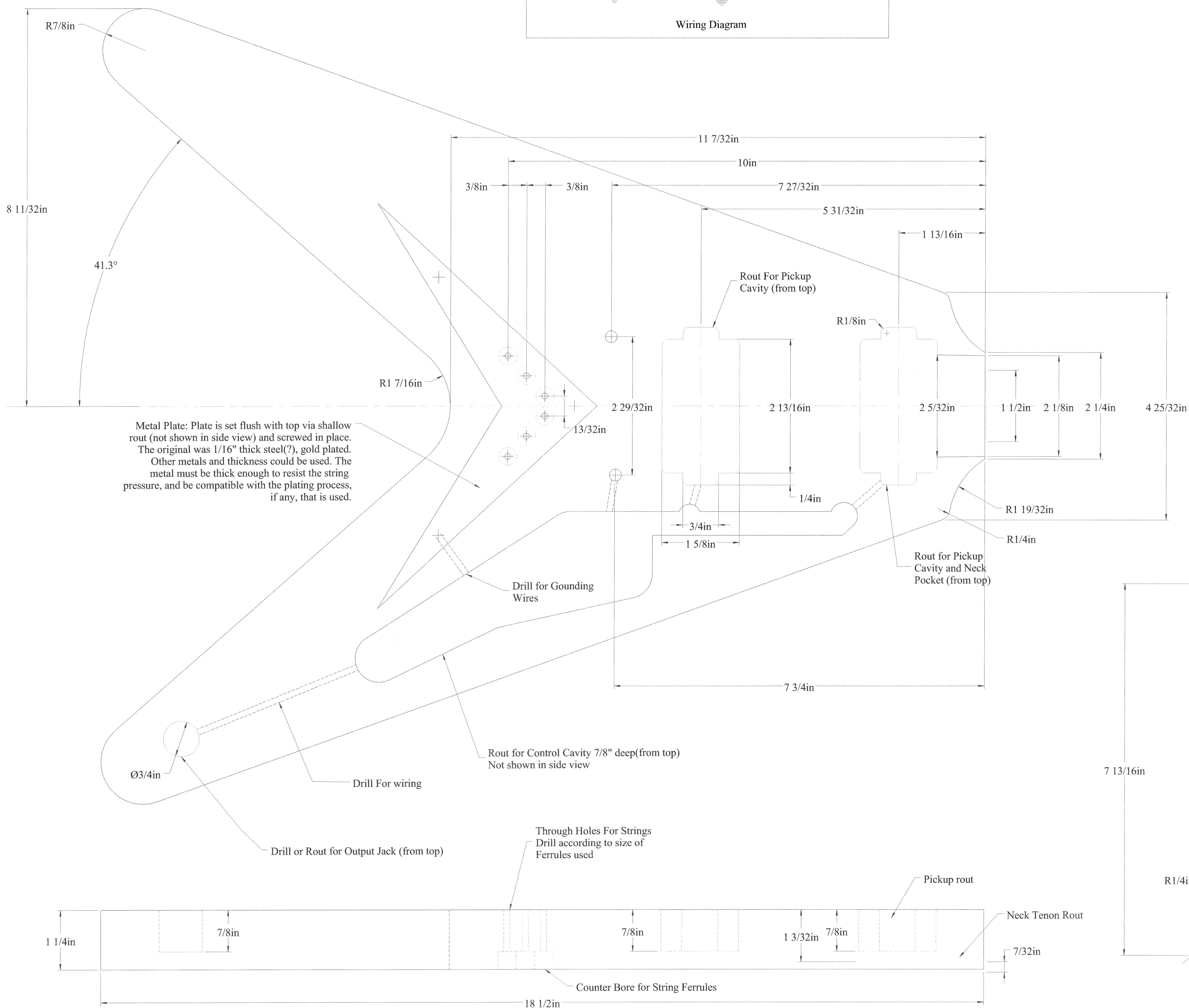
Neck Angle 1.5 degrees

- Construction Note:
- 1: Temporarily fit the neck to the body without the fretboard installed.
  - 2: Route the pickup cavity, removing the indicated portion on the neck tenon.
  - 3: Temporarily install pickup and ring.
  - 4: Temporarily fit the fretboard and trim to fit against pickup mounting ring.



Wiring Diagram

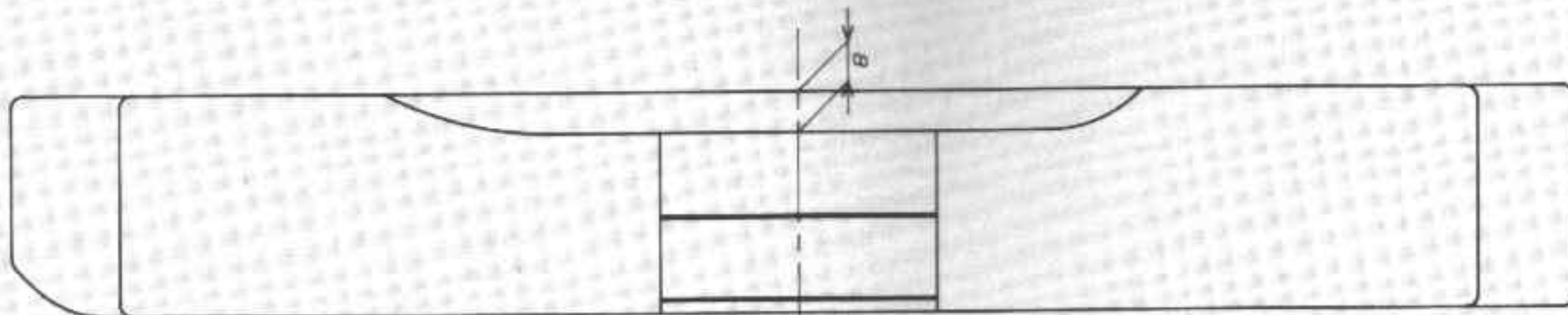
PickGuard. Trim to fit flush with pickup rings.



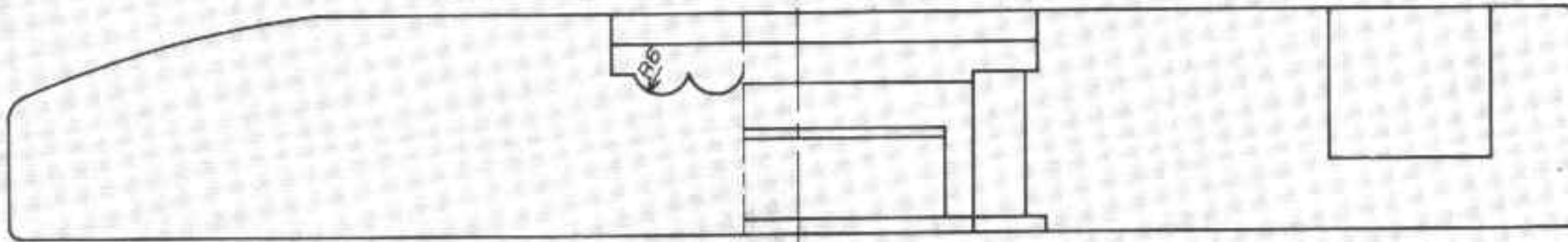
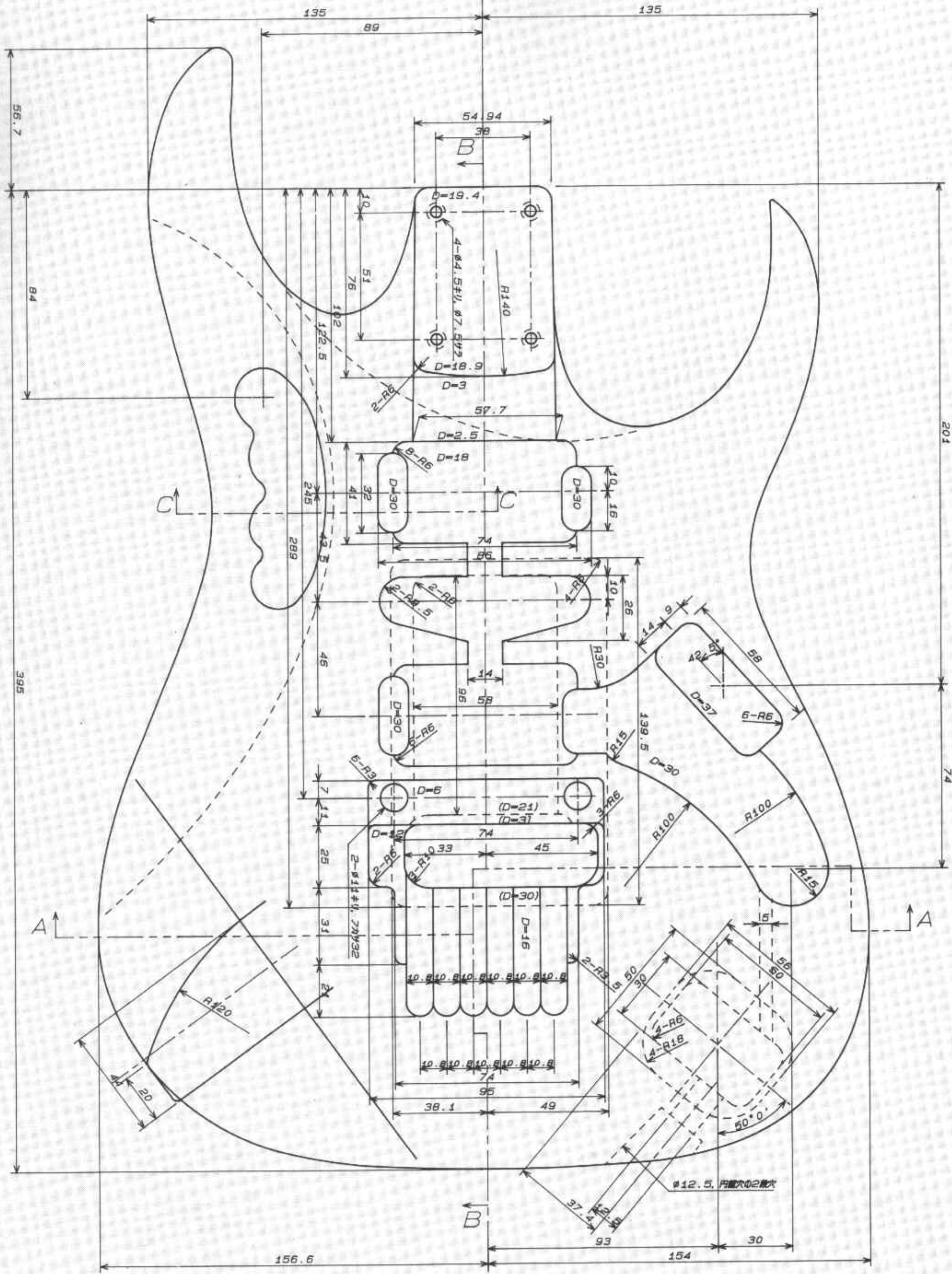
Metal Plate: Plate is set flush with top via shallow rout (not shown in side view) and screwed in place. The original was 1/16" thick steel(?), gold plated. Other metals and thickness could be used. The metal must be thick enough to resist the string pressure, and be compatible with the plating process, if any, that is used.

- Selector Switch
- Neck Volume
- Bridge Volume
- Tone
- Output Jack
- Output Jack Cover

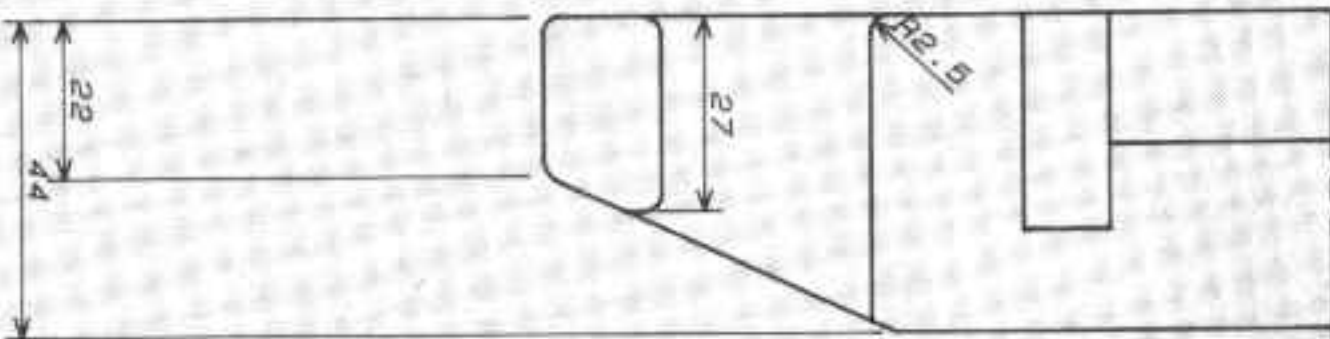




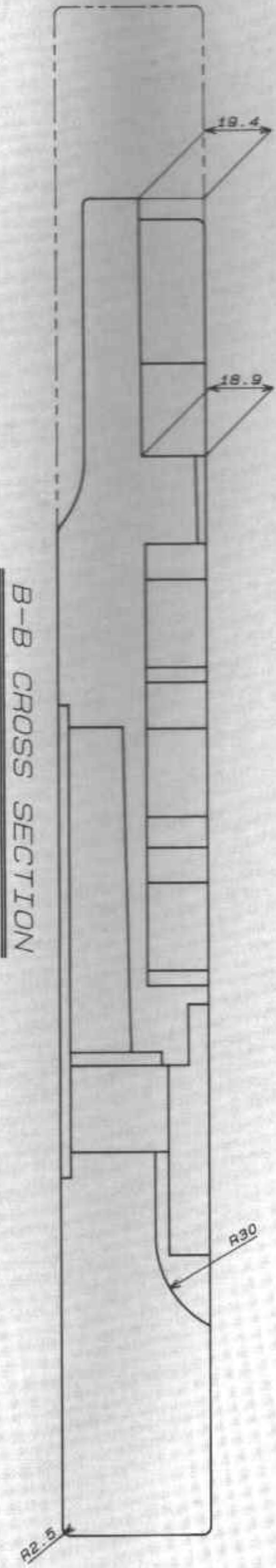
FRONT VIEW



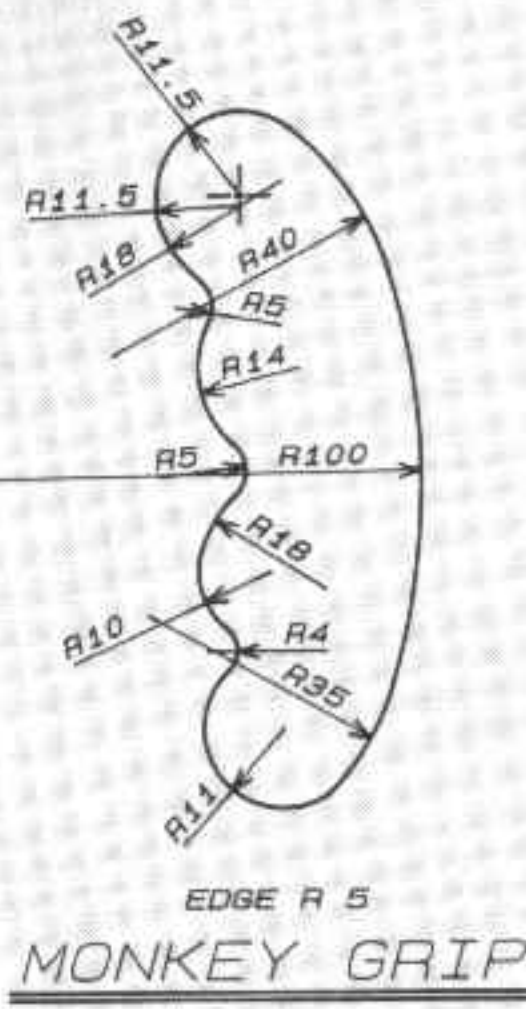
A-A CROSS SECTION



C-C CROSS SECTION



B-B CROSS SECTION



MODEL NUMBER	MODEL NAME	SCALE
JEM 777	ELECTRIC GUITAR	1/1
APPROVED BY	CHECKED BY	DRAWING BY
		FRITZ KATOH
		DATE
		1989 7 19
HOSHINO GAKKI CO., LTD.		DRAWING NUMBER
NO. 26, 3-CHOME, SHIMIZU-CHUO, NAGOYA, JAPAN		F89059
TEL: 052-491-0281		PAPER
		A-1